

The Valley Profile

100% THAMES

100% LOCALLY OWNED & OPERATED

626 Pollen Street 07 868 6124

TRUST YOUR LOCAL EXPERTS

Totalspan Coromandel 1/46 Kopu Road, Kopu, Thames
P 07 869 0400 E coromandel@totalspan.co.nz

0800 TOTALSPAN
TOTALSPAN.CO.NZ



Out to lunch



Jan Mitchell and her team serve healthy lunches at Paeroa College.
Photo: ALICE PARMINTER

By ALICE PARMINTER, Public Interest
Journalism funded by NZ On Air

While many of New Zealand's schools are disillusioned with the government's nationwide Healthy School Lunches programme, a Hauraki school is showing it's still possible to provide tasty, healthy meals to students.

Paeroa College's school lunches are prepared on site, from fresh, locally-supplied ingredients.

Each day kitchen supervisor Jan Mitchell and her team make up to 360 meals from scratch in the school's commercial kitchen. Their menu is varied - featuring crowd favourites such as spaghetti bolognese, fresh subway sandwiches, and nachos - and each meal is stuffed with vegetables. The main courses are supplemented with fresh fruit, nuts, and muesli bars at morning tea.

The trio were proud of the meals they provided, Jan said.

"The kids are loving it. And the feedback from some of the students I've been getting: 'that's actually nicer than my mum's, but don't tell her'," Jan said.

"It's all about the kids, and it's good to be feeding them."

School lunches are nothing new at Paeroa College. But the overhaul of the government's school lunch programme, which took effect at the beginning of 2025, came with several changes.

The Ka Ora, Ka Ako or Healthy School Lunches programme is the initiative which provides meals to 242,000 disadvantaged students nationwide. Most schools in the programme operate under the external model, with lunches delivered daily by the School Lunch Collective. Some schools, such as Paeroa College, operate under the internal model, preparing their meals onsite. There is also an option under the legislation for an iwi and hapū partnership model.

However, schools on the external model are not permitted to switch to another model without Ministry of Education approval.

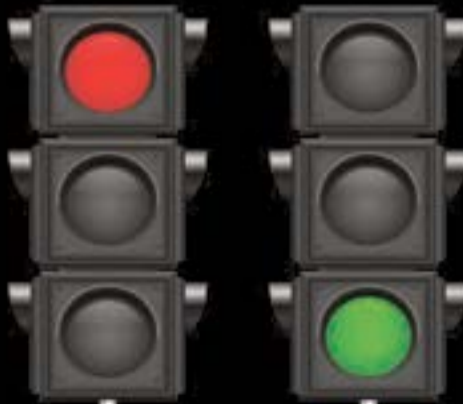
The mandated budget for external model schools is \$3 per meal. Internal model schools are allocated \$4 per meal, to account for the additional costs of administration, staffing, and waste.

The new internal allowance is roughly half what it was in the

CONTINUED ON P2

We all know the drill...

RED is a NO



GREEN is a GO



Phone us today

0800 4 MY BIN (0800 469 246)

www.smartenvironmental.co.nz



Lunch programme called into question

CONTINUED FROM P1

past, Jan said, but even so her team is coming in well under budget.

Outside the college however, many other schools aren't so happy with the new programme.

Turua School, which runs on the external model, was one of several schools nationwide whose meals turned up late in the initial weeks of the programme - once having to resort to sandwiches made by staff to keep the kids fed. Principal Karen Houghton said the meals were now arriving on time, but while she appreciated that lunches were available for her students, their quality left something to be desired.

"They're not as good as what they had before," she said.

"The children don't seem to enjoy it that much, so we have a lot of leftovers. I do think that it would be great to have a local supplier and put that money back into the local economy."

Another school principal told *The Profile* they could "write an essay" about their complaints but they were unable to comment publicly about the issue.

A parliamentary petition has also been circulating to cancel the School Lunch Collective's contract. The petition, started by Māori lawyer Tania Waikato on March 12, is urging the government to return the lunch contracts to local providers. As at March 31, it had 7978 signatures. The Collective has been mired with complaints since it took over the external providers contract, with images of frozen or over-



The Paeroa College kitchen team provide healthy, tasty, and filling meals each day. BELOW: Photographs show how many fresh ingredients go into each school meal. Photos: ALICE PARMINTER

heated, mass-produced and unappetising meals circulating in the national media.

But Paeroa College principal Andrew Cameron said their programme was an example of school lunches done right.

"We're showing that we have a sustainable model, and I think if we can show that with a school our size, then other schools can do it similarly," he said.

"[The external model] is where all the headaches are at the moment, everything you're reading and hearing.

"And ultimately, the only reason [we're] a success is because we've got three awesome people in there working hard for our kids.



"We want to pump Jan's tyres up because there's so much bad publicity around school lunches, the centralised model, and we could not be happier with the situation we're in."



Don't forget to put your clocks back an hour this Sunday



Hi, my name is Pete the Pukeko and I'm here to help you. Find me in one of the display advertisements in *The Valley Profile*, then email admin@valleyprofile.co.nz with your full name & postal address, and the business name and page number of the ad by the following Monday to go in the draw to win a Lotto ticket. Last issue it was in the Country Dog Garden Centre ad.

PLACE AN ADVERTISEMENT/ADVERTORIAL: Advertising Manager Nikki Sanders, Ph 022 130 3885, nikki@valleyprofile.co.nz; Feature Writer Davidda Hikatangata, Ph 022 174 3988, davidda@valleyprofile.co.nz.
NEWS/EDITORIAL: Managing Editor/Owner Teresa Ramsey, Ph 0204 0944 853, editor@valleyprofile.co.nz; Senior Reporter Kelley Tantau, Ph 022 619 4889, kelley@valleyprofile.co.nz; Reporter Alice Parminter, Ph 022 527 0988, alice@valleyprofile.co.nz.
LETTERS: Send letters to the editor: editor@valleyprofile.co.nz or 2 Queen St, Paeroa, 3600. Letters must include your full name and address, be 250 words or less and may be edited, abridged or rejected at editor's discretion.
THE VALLEY PROFILE is independently owned and operated. It is delivered weekly to every letterbox in the Hauraki Plains, Paeroa, Waihi, Thames, Thames Coast, plus bulk distribution peninsula-wide, with an estimated reach of 35,000 readers. **OFFICE: 2 QUEEN ST, PAEROA, 3600 | ISSN 2703-5700**

FIND US ONLINE:
www.valleyprofile.co.nz or download the Coromandel App on your smart phone

DAVE TAYLOR ROOFING

SPECIALISING IN:
 Waterproofing Roofs and decks,
 TPO Enviroclad • Butyl • Epiclاد • Torch On

YOUR LOCAL ROOFING CONTRACTOR

TEL: 027 2707 277
 EML: davetaylorroofing@gmail.com
 WWW: davetaylorroofing.co.nz

FOR EXCEPTIONAL WINDOWS & DOORS

fairview
 EXCEPTIONAL WINDOWS & DOORS

FAIRVIEW THAMES

10 Millar Place, Kopu, Thames
 P: 07 868 9105 | office@fairviewthames.co.nz
www.fairviewthames.co.nz

Love your view

Accountants

The Hauraki Taxation Service Limited

- Established 1982
- For out of town independent accounting advice
- Approved agents for Inland Revenue Department
- Offices in Thames & Coromandel Town

myob xero CASHMANAGER

328 Pollen Street, Thames
 Ph/Fax: 07 868-9710
 E: thames@haurakitaxation.co.nz

95 Kapanga Rd, Coromandel
 Ph/Fax: 07 866-8660
 E: coro@haurakitaxation.co.nz

Thames Tides

Wed Apr 2	Thu Apr 3	Fri Apr 4	Sat Apr 5	Sun Apr 6	Mon Apr 7	Tue Apr 8
Morning: 4:41am 0.3, 11:03am 3.7 Afternoon: 5:08pm 0.2, 11:25pm 3.7 Best At: 7:32am 7:10pm Rise: 11:53am, Set: 9:21pm	Morning: 5:32am 0.4, 11:55am 3.6 Afternoon: 5:57pm 0.3, 11:55pm 3.6 Best At: 7:33am 7:09pm Rise: 1:07pm, Set: 10:14pm	Morning: 12:17am 3.6, 6:27am 0.6 Afternoon: 12:48pm 3.4, 6:49pm 0.5 Best At: 7:34am 7:07pm Rise: 2:12pm, Set: 11:17pm	Morning: 1:12am 3.4, 7:26am 0.8 Afternoon: 1:43pm 3.2, 7:44pm 0.7 Best At: 7:35am 7:06pm First Quarter: Rise 3:07pm	Morning: 2:12am 3.2, 7:30am 0.9 Afternoon: 1:41pm 3.1, 7:47pm 0.9 Best At: 6:36am 6:05pm Set: 12:24am, Rise: 2:51pm	Morning: 2:17am 3.1, 8:37am 1.0 Afternoon: 2:45pm 3.0, 8:57pm 1.0 Best At: 6:36am 6:03pm Set: 12:32am, Rise: 3:26pm	Morning: 3:24am 3.1, 9:42am 1.0 Afternoon: 3:52pm 2.9, 10:06pm 1.0 Best At: 6:37am 6:02pm Set: 1:38am, Rise: 3:54pm

*Not for navigational purposes. Graphic supplied by OceanFun Publishing Ltd. www.tideswiz.com www.tidespy.com www.ofu.co.nz

MOON AND FISH KEYS
 New Moon, First Quarter, Full Moon, Last Quarter
 Good Fishing (fish icon), Fair Fishing (fish icon), Not So Good (fish icon)

TIME DIFFERENCES FOR OTHER PLACES
 To determine tide times at the following places, add (+) or subtract (-) the given time difference from the Thames times listed in the calendar.

PLACE	Hr	HIGH Mm	LOW Mm
Coromandel	-0	04	-0 04
Whitianga	-0	01	-0 05
Tairua	+0	10	+0 21
Whangamata	-0	03	-0 05
Waihi Beach	-0	12	-0 12

Tennis match memorialises ‘good bugger’

By KELLEY TANTAU, Public Interest Journalism funded by NZ On Air

Steven Slavich was “one of life’s good guys”.

He was a farmer and father-of-three living in Paeroa, and one of Jodi Morrison’s early memories of her close friend’s dad was his knack for getting people to pick up a tennis racquet.

It wasn’t so much his passion, she said, but his enthusiasm when everyone joined in.

“Steven was, genuinely, one of life’s good guys. Just super nice. If he wasn’t so nice he probably wouldn’t have stopped to help those kids and then he’d still be here.”

Steven was killed in 1991, after stopping along State Highway 26 to give two youths - one of them Shane Rogers - a ride.

Rogers, who was 16 at the time, shot him, but when Steven tried to escape from the vehicle, he caught his arm in a seatbelt. Rogers grabbed the steering wheel and sped off, dragging Steven along the road.

Rogers was sentenced to life imprisonment, but was paroled in 2002 after serving about 10 years.

Jodi was 15 at the time of the



There were 15 pairings, plus plenty of sideline supporters, at this year’s Steven Slavich Memorial Tennis Match. LEFT: Steven’s grandson, Ryder Van Hellemond and his aunty, Crystal Van Hellemond, took out the trophy. Photos: SUPPLIED

doubles tennis tournament that honoured Steven by doing just the thing he always did: bring people together.

“My memory of him with regards to tennis is not so much about his passion for tennis itself, but for getting anyone and everyone to join in - have a go and enjoy it - whether you were

a great tennis player, had never played before, or were anywhere in between. He just wanted people to try it and have fun doing it,” Jodi told *The Profile*.

“The emphasis [of the tournament] has always been on having a go and having fun. So we generally try and pair weaker or non-players up with a stronger

player. Sometimes we just draw partners out of a hat, but we often do a little subtle shuffling to even out the competition because that feels like the spirit of the tournament.”

Jodi said she was “extremely proud” of the Hikutaia Sports Club for holding the event.

“Frana is my closest friend, but the whole family are, like Steven was, ‘good buggers’, and it brings me joy to see how much it means to them that people still want to turn up in his honour.

“It’s a tournament where as many club members as non-members make the effort to come,” Jodi said.

The tournament has been held consistently since 1992, but through a variety of reasons like weather, the Covid-19 pandemic, and “procrastination”, it hasn’t run since 2016.

“Luckily this year Marica, Steven’s youngest daughter, rang me up and just said: ‘Let’s do it on February 21’ and that’s all we needed. We had 15 pairings, plus plenty of sideline supporters, including 10 of Steven’s grandkids and three great grandies.”

The cherry on top was Steven’s grandson, Ryder Van Hellemond - playing with his aunty Crystal Van Hellemond - taking out the trophy this year.



CARSWELL CONSTRUCTION LTD

Trade Qualified | Licenced Builders | Licenced Designer On Site

mb Member

GI GI Building Institute

KIWISPAN

SKYLINE BUILDINGS

Garador Your Garage Door Specialists

- Houses
- Garages
- Farm Sheds
- Commercial
- Garage Doors
- Auto Openers

We take care of everything from start to finish, including consents

90C Kopu Road, Kopu, (next to bridge), Thames • Ph: 07 868 8663 or 0800 374 000
 info@carswellconstruction.co.nz • www.carswellconstruction.co.nz

STARTS TOMORROW!

Flash Sale

THURS 3 - SUN 6 APRIL

30-50%

off* all La-Z-Boy Furniture

LA Z BOY

*T&Cs apply

BAXTERS LA Z BOY FURNITURE GALLERY

Just life comfortably.

FURNITURE & BEDS R US

205 SEALEY ST, THAMES | PH 07 868 6128



Exceptional. Every day.



New Listing

Waihi
20 Connell Street

4 1 2

Character, Space and Potential

This four bedroom character home could be just the opportunity you've been waiting for. Set on a fully fenced section of 2023m² (more or less), this four-bedroom home offers loads of space. For sale as is where is. Zoned industrial, offers options.

eves.co.nz/ewa19870

Asking Price \$585,000
View by appointment
Lester Mullan 021 121 4940
lester.mullan@eves.co.nz



New Listing

Waihi
14A Kenny Street

3 1 1

Delightful Cottage Charm

This charming three-bedroom beauty has been transformed, enhancing some of the home's best features. Inside discover a fresh new interior. New kitchen, new bathroom, new laundry. Country gardens and private courtyard.

For Sale by Deadline Private Treaty
Closes 1pm, Tues 15 Apr (unless sold prior)
View by appointment
Dynasty Holtz 022 124 1186
dynasty.holtz@eves.co.nz

eves.co.nz/ewa19869



New Listing

Waihi
68 Roberts Street

Sharp Price on Sunny Section

A sunny, private section positioned down a ROW and tucked off the road found a 580 sqm (more or less) flat site with established trees bordering the side. Essential services to the site include power and water. This is a blank canvas ready to go.

eves.co.nz/ewa19936

Asking Price \$285,000
View by appointment
Dynasty Holtz 022 124 1186
dynasty.holtz@eves.co.nz



Open Home

Waihi
116 Princes Street, Waikino

3 2 1 2

Explore Space Privacy & Views

This three bedroom, two bathroom home offers privacy, comfort, and space. Set on 8,705sqm (approx.), it features established grounds, fruit trees, paddocks, and room for a shed (with council approval). Spacious living opens to a sunny private deck.

Asking Price \$885,000
View 12.15-12.45pm Sat 5 Apr or by appointment
Dynasty Holtz 022 124 1186
dynasty.holtz@eves.co.nz

eves.co.nz/ewa18450



Waihi
10 Richmal Street

More than a Section this is a Lifestyle

Sunny section 1722sqm (approx.) with established orchard. Positioned on the outskirts for a lifestyle but town convenience. Fully fenced with a gated entrance, and no covenants gives you many options to explore. Call Dynasty for more information and to view.

eves.co.nz/ewa18421

Asking Price \$439,000
View by appointment
Dynasty Holtz 022 124 1186
dynasty.holtz@eves.co.nz



Waihi
10D Kensington Road

2 1 1 1

Light Bright, an Absolute Delight

Feel completely at home here in this warm and welcoming two bedroom, one bathroom residence. Open plan living and dining flow to a sunny entertaining deck. Lovely gardens. Detached single garage/workshop.

Asking Price \$670,000
View by appointment
Dynasty Holtz 022 124 1186
dynasty.holtz@eves.co.nz

eves.co.nz/ewa19879



Waihi
40 Evans Street

3 1 1 1

First Home or Next Project

This three bedroom, one bathroom cottage would love a refresh. Positioned on a manageable 459 sqm (approx.) section, this home needs someone with the vision to renovate and rejuvenate. The heart of the home is a spacious living room with a cosy fireplace.

eves.co.nz/ewa19851

Asking Price \$499,000
View by appointment
Dynasty Holtz 022 124 1186
dynasty.holtz@eves.co.nz



Enjoy peace of mind with Eves Property Management

We make owning a rental property simple and rewarding.

Talk to us today!

Eves Waihi
☎ 07 863 1118 @ waihi@eves.co.nz

EVES | Property Management
Eves Realty Ltd, Licensed under the REAA 2008

Classes for combat sport leave positive impact

JIU-JITSU

By **KELLEY TANTAU**, Public Interest Journalism funded by NZ On Air

Moving to Thames and discovering there wasn't an opportunity for locals to train in Brazilian Jiu-Jitsu led blue belt Max Sedarat to start up classes of his own.

Not only was the combat sport great for teaching patience and respect, it also demonstrated that "age and size don't matter" - a lesson Max said he quickly learned.

Brazilian jiu-jitsu is described as a self-defense system, martial art, and combat sport based on grappling, ground fighting, and submission holds.

Max started training at Auckland MMA in Pakuranga under VR Jiu-Jitsu about four years ago, but just over a year ago, he made the move to Thames.

"Thames did not offer any Jiu-Jitsu classes, but I went to check out the local boxing club, Never Surrender, and [they] could not have been more welcoming and allowed me to use the space to start some."

Max is currently teaching two classes a week out of the Never Surrender gym at 424b Pollen Street, one for children and one for adults.

There are already between 7-10 children taking lessons, ranging in age from five to 13; and 15 people in the adult classes, including some partici-



Max Sedarat, far right, with the students from one of his Brazilian Jiu-Jitsu classes in Thames. RIGHT: Max Sedarat is a blue belt who started training in Auckland.

Photos: SUPPLIED

pants over 60-years-old, Max said.

"I think there are many reasons why people should try jiu-jitsu. The lessons you gain in class are relevant to everyday life. Personally, I've learned many valuable lessons through training - patience, respect, staying humble, asking questions, and being open to learning."

"Jiu-jitsu is also great exercise," he added. "It is a full-body workout that will test your cardio, strength, reflexes, and flexibility. While under the pressure of your opponent trying to choke you, you also have to remain mentally strong."

Max said technique outweighed brute strength when

it came to Brazilian Jiu-Jitsu, having learned that lesson early on while training in Auckland.

"When you show up to your first class as a 27-year-old man and get your butt kicked by a 14-year-old, you quickly learn that age and size don't matter as much as technique and mindset in this sport."

Max said that coaching the Jiu-Jitsu classes in Thames was a highlight of his journey in the sport thus far.

"I am a blue belt in Brazilian Jiu-Jitsu. For those who may not know, it goes white, blue, purple, brown, and then black. So I have quite a bit more learning to do myself."

"But I am glad to be able to share this experience with oth-



ers and I hope to provide the same positive impact that this sport has had on me."

DETAILS: Max's classes run Mondays, 5pm for kids, 6pm for adults. Kids classes are free/koha

and the adults classes are free for the first week. For info or to get in touch, maxsedarat22@gmail.com.



MASSIVE AUTUMN SALE

UP TO

18 MONTHS INTEREST FREE*

NAPNEST SNOOZY			NAPNEST COMFY		
SIZE	MATTRESS ONLY	MATTRESS & BASE	SIZE	MATTRESS ONLY	MATTRESS & BASE
S	\$249	\$559	S	\$299	\$599
KS	\$299	\$599	KS	\$359	\$689
D	\$349	\$689	D	\$469	\$799
Q	\$399	\$789	Q	\$599	\$999
K	\$449	\$999	K	\$649	\$1049

FREE DELIVERY*

*Waikato and Hauraki region only. Sale ends 30.04.25

NAPNEST LUXURY PLUSH			MOANA PLUSH NZ MADE		
SIZE	MATTRESS ONLY	MATTRESS & BASE	SIZE	MATTRESS ONLY	MATTRESS & BASE
Q	\$799	\$1168	S	\$849	\$1149
K	\$869	\$1418	KS	\$974	\$1399
SK	\$899	\$1528	D	\$1124	\$1499
			Q	\$1299	\$1599
			K	\$1349	\$1849

*** T's & C's applied via Gem Visa, Finance Now and Q card**

CHECK OUT OUR PAYMENT OPTIONS:

100% LOCALLY OWNED

SUPERPRICE FURNITURE

Where the price is always right

SPF Furniture Thames 513 Pollen Street, Thames 3500 ☎ 07 2116954

SPF Bed Shop 543 Pollen Street, Thames 3500 ☎ 07 2119307

SPF Whitianga 33 Albert Street, Whitianga 3510 ☎ 07 2800367

www.superpricefurniture.co.nz

TradeZone
Thames

Industrial supply specialists that work for your business.

Contact us today:
admin@readbros.co.nz

- SERVICES AVAILABLE:
- Key Cutting • Sharpening
 - Wire Rope Swaging • Rope Splicing
 - Cut-to-length Extrusions
 - Dive Cylinder filling & testing on site

SEE US AT: READ BROS. HARDWARE
308 Pollen St, Thames
www.readbros.co.nz • 07 868 6608



PH: (07) 868 9422

Stephen Young

0274 820 536



P.O. Box 768, Thames

DEPOT: 26 QUEEN ST, KOPU THAMES

Yearly savings of \$100k from binned council bins

By ALICE PARMINTER, Public Interest Journalism funded by NZ On Air

Several rubbish bins are being removed in the Hauraki district, a report has revealed.

A review, tabled at the Hauraki District Council's March 27 meeting, found the Parks and Reserves litter bin budget has increased year on year with continuous overspend.

Currently the council manages 100 litter bins, 60 of which are Big Belly Bins. The total expenditure for litter bin activity for the 2023/24 financial year was around \$382,000 - nearly \$114,000 over budget.

Of particular concern are the Big Belly Bins - while they were installed to reduce labour costs, the review found that they needed to be set to only 50 per cent capacity for health and safety reasons, to avoid the bin liners being too heavy for staff to safely lift and empty.

The review also cited misuse of public bins, with people regularly using them to dispose of household waste, and said kerbside recycling bins were regularly contaminated with regular rubbish and consequently sent to landfill.

"It's a damn shame that we've gone to all this effort to put up bins for recycling and people are putting their normal rubbish in them," Mayor Toby Adams said at the meeting.

"Public rubbish bins are not being used effectively - they have a huge price tag and it's coming out of your rates and hence we've got to make some changes."

Councillors approved recommendations to remove 13 Big Belly Bins com-



Big Belly Bins are being removed from the Hauraki district. Photo: ALICE PARMINTER

pletely; replace the others with either standard bins or ones with lids that do not open too wide; and replace 12 recycling bin units with standard bins. The changes are projected to save more than \$100,000 per year.

Meanwhile, the council has also set its new dog fees for the 2025/26 financial year. Registration fees are remaining unchanged, however the impound fees have been increased for dogs which are unregistered. Councillors also agreed on an adoption fee of \$50.



[creative conversations]

Hey Thames and Coast!

We are coming to kōrero with you to learn about your creative mahi and introduce you to our initiatives that can help amplify your creative practice. Plus it's an excellent opportunity to socialise, network, and connect with others. This is not a boring sit-down hui with pen and paper but an invitation to a great night out, good kai, and forging new connections. **R.S.V.P.**

info.creativecoromandel@gmail.com



09 April
5:30-7:30pm

Bite Cafe
601 Mackay St
opposite hospital

CREATIVE HE MANA TOI
COROMANDEL MOEHAU TRUST



FOR ALL YOUR CATERING NEEDS

For all your catering needs, Weddings, Funerals, Meetings, Team Building days, Parties, any occasion you need catered.

50-Seat Function Room available
(Burton's Out the Back)

404 Pollen Street Thames

Ph: 022 380 9735

Email: burtonsbistro.catering@gmail.com

Website: burtoncatering.co.nz

Facebook: @burtonscatering

Lunch Bar opening hours: 7:30am-3pm Monday-Friday



YOUR LOCAL BUTCHER
QUALITY EVERYTIME

PROFESSIONAL, HONEST AND RELIABLE HOME KILL
PROCESSING AVAILABLE
CALL NOW TO MAKE A BOOKING

OPEN Mon - Fri 7.30am until 5.30pm & Sat 8am until 1pm
61 Belmont Road Paeroa 07 862 6959

Prefer to be in the adult learning environment?

We have youth guarantee programmes in our tertiary education centre and Polytech level courses.

Come along and see us



Valley Education

free courses • free transport

Call or 07 868 7892

text us 027 314 1577

www.valleyeducation.co.nz

Waihi warms up

A wild wave of wanderers welcomed in the Waihi Warm Up Party for Beach Hop 2025 on March 26. A convoy of classic cars rolled through the main street, while happy punters admired and snapped photos of their favourites. Some people were decked out from top to toe in their sharpest threads for the fashion show and best dressed competition, while others simply glammed up to add to the atmosphere. Reporter **DAVIDDA HIKATANGATA** revved up the camera and captured some of the day's excitement.



Catherine Searancke brings a pop of colour to the event.



Vehicles vroom down Waihi's main street.

Photos: DAVIDDA HIKATANGATA/ SUPPLIED



Rylee enjoys checking out all the cool cars in town.



Hetherington House residents celebrate with their own mini Beach Hop.



Graham Wilson, left, and Terry McIntyre from Christchurch.



Denee Read and Kay Warrender.

THE BIG SELLOFF



36 MONTHS INTEREST FREE*

KYRO PILLOW TOP

QUEEN MATTRESS + BASE

\$629

ONLY **20** QUEEN BEDS LEFT



The Sleep Deal Everyone Loves - Now Even Better!

LIMITED TIME DEAL!

In-Store Only

TRADE-IN PROMOTION

Up To **\$300** Trade-In Discount



We deliver your new mattress and pick up your old one at the same time!

*Minimum purchase amount of \$1999 applicable. Lending Criteria, \$50 Annual Account Fee, Fees, Minimum Transfer Amount, Ts&Cs apply. Standard Interest Rate (currently 28.95% p.a.) applies to any outstanding balance at end of interest free period. \$55 Establishment Fee or \$35 Advance Fee applies to Long Term Finance Purchases.

Shop 22, Goldfields Shopping Centre, Thames
Mon-Fri 9am-5pm / Sat 9am-4pm / Sun 10am-3pm Ph: 07 868 3332

Beds4U reserve the right to amend any misprints or error within this advertisement. Price subject to mattress and base only. T&Cs apply. The trade-in must be arranged at the time of purchase and is available in-store only.

BEDS4U

.co.nz
Your local sleep experts

Identity of drowned swimmer remains a mystery



As part of a Valley Profile series, **MEGHAN HAWKES** explores our local history by seeking out stories of life and death in the Thames Valley

The man seen to strip off his clothes and jump into the Piako River was of sturdy build, fair haired, probably in his mid-30s.

He swam strongly for some distance until the middle of the river was reached, when he was suddenly swept away by the swiftly running water. His demise on that March day in 1904 was witnessed by local settler John McWilliams and the alarm raised.

During the search, as Detective Miller and two other men were dragging the river, Charles Taylor, a fisherman working near the river mouth, discovered a body entangled in one of his nets.

It was handed over to Detective Miller and taken across to Thames. The man's clothes - a blue coat and vest, tennis shirt, and gray tweed trousers - had been found tied to a ti-tree stake at the point where he went into the water. It was supposed he was making for a dinghy on the opposite side of the river, intending to cross back in it for his clothing.

The man was reported to be a German, last seen alive at a sur-

veyor's camp a few miles distant. He was later identified as not a German, but Mr Watkins, a member of a Piako survey party, formerly in one of the government departments in Auckland. But when friends of Watkins viewed the body they stated it was not him.

An inquest yielded few answers. There was no evidence as to the identity of the deceased. He was a man about 35, 5ft 8in in height, with fair hair and a reddish moustache. Detective Miller had a suspicion that he was named McLean, an engineer, but he was unable to substantiate this.

All that could conclusively be said was that he accidentally drowned. The police were satisfied he was not Watkins, who had left Thames the previous Monday for Papakura for a holiday. This information reassured Watkins' friends, some of whom had telegraphed from Auckland making worried inquiries.

The unknown man likely became one of many who appeared to just vanish from their lives, leaving family and friends with no idea what happened to them. This was common in the late 19th-early 20th century, a time of much migration, slow communication and inadequate record keeping.

Newspaper columns were published around the world seeking loved ones under the headings of *Long lost relatives* or *Missing friends*. Compiled by England's *Lloyds' Weekly* newspaper, the pleas were often heart breaking:

James Pipe Pettitt, of Suffolk, left London in 1873 on board the *Duke of Edinburgh* for New Zea-



Landing in a new country - immigrants come ashore at Auckland. SUPPLIED

land, and was last heard of by his parents in 1875, from Christchurch, New Zealand.

John Caldicut and his sister Martha were last heard of on February 14, 1874, when their address was Baillie St, Shortland, Thames Goldfields, New Zealand.

Killott (David), sailor, native of Hammersmith, sailed from the London docks, supposed in the *John Duncan*, bound for New Zealand, 30 years ago. Brother William can gain no tidings of him since.

Inman (Walter), sailor, of Toxteth Park, Liverpool, left Cardiff in 1874; last heard of in New Zealand. His sisters, Emily and Ety, inquire. Parents are dead.

George Smith arrived at Auckland from Islington at Christmas, 1874, and 10 years since had his

letters sent to PO, Thames Goldfields. His father, mother, brothers, and sisters long for news.

Edward Brownlow employed at Messrs Price Bros, iron founders, Grahamstown, Thames, New Zealand, 1875; afterwards at Cornwall Arms Hotel, Grahamstown, New Zealand; last heard of at Adelaide, New South Wales. Sister Charlotte inquires.

John Thomas Bentley left Ford St, Old Ford, in 1885 to go to Windsor Hotel, Windsor, New Zealand. His poor mother has had no tidings of him for nearly nine years.

Misspelt addresses and geographical confusion added to the uncertainty as with those looking for Joseph Stephen Price, of Chatham, England, went to New Zealand in June, 1884, and has not

been heard of since 1885, when he was working as a blacksmith at the Addington works, Christchurch.

Some assumed a new identity such as John Allen appeared to do when he left Rishton for Scotland, en route, for New Zealand, in 1874-5; sailed ship *Jessie Ashburn* under name A Smith. Last wrote from Wellington.

Occasionally there were positive outcomes. In 1893, the *Thames Star* reported "A Thamesite hears news of his brother - the importance of looking over the list of Long Lost Relatives that we from time to time reprinted from *Lloyd's Weekly* cannot be overestimated".

The issue of July 23 contains the following paragraph: "Eli Morgan (April 2nd) replies to Brother Samuel from Thames, New Zealand. It is 25 years since the brothers had heard of each other".

A family discovering a female relative who had disappeared somewhere in New Zealand thanked *Lloyd's* "again and again for their kindness on behalf of her distracted parents".

The mother wrote to the editor "God will bless you, dear sir, for your goodness to anxious mothers".

The columns ran until around 1916 in New Zealand papers when the mounting lists of those who went missing in World War I took priority and a new era of faster communication and contact emerged.

It is unknown where the man who dived into the Piako was buried, or if he was ever identified, just as it is unknown who was left waiting to hear from him.

Thames Autos

A Division of Takarini Motors Ltd R.M.V.T.

★ ★

HOME DEMONSTRATIONS AND DELIVERIES AVAILABLE
WE CAN COME TO YOU

★ ★

- www.thamesautos.co.nz -

<p>2008 Nissan Pathfinder Auto, V6, 4WD, NZ New, 7 Seater</p> <p style="font-weight: bold; color: red; font-size: 1.2em;">\$11,990</p>	<p>2001 Holden Commodore VX V6 Auto, Best Possible Example</p> <p style="font-weight: bold; color: red; font-size: 1.2em;">\$7,990</p>	<p>2017 Hyundai Elantra Elite Auto, 2 Ltr, NZ New, Superb Condition</p> <p style="font-weight: bold; color: red; font-size: 1.2em;">\$13,990</p>	<p>2012 Ssangyong Actyon 5 Speed Diesel, 2WD, TOP TRUCK</p> <p style="font-weight: bold; color: red; font-size: 1.2em;">NOW \$10,990</p>
<p>2014 Holden Cruz Z Series Auto, Turbo, Top Specs</p> <p style="font-weight: bold; color: red; font-size: 1.2em;">\$11,990</p>	<p>2011 Jaguar XJ 5.0 V8 Auto, NZ New THIS WEEKS SPECIAL</p> <p style="font-weight: bold; color: red; font-size: 1.2em;">\$17,990</p>	<p>2017 Nissan X-Trail Auto 2WD, 129Kms, Alloys, TOP SPEC</p> <p style="font-weight: bold; color: red; font-size: 1.2em;">\$14,990</p>	<p>2014 VWE Polo TSi Auto, NZ New, Top Example</p> <p style="font-weight: bold; color: red; font-size: 1.2em;">JUST \$7,990</p>

LEYLAND STOWE

Mob: 027 355 5152 Ph: 07 868 8981
or 0800 868 898
609 Pollen St, Thames RMVT
thamesautos@xtra.co.nz

No Deposit Finance available on all vehicles. Full workshop servicing & repairs available including Auto Electrical service

SPORTS

Email your sports news, reports and photos to editor@valleyprofile.co.nz

Athletes compete

Paeroa Domain was filled with secondary school students from across Thames Valley on March 18, for the inter-school athletics competition. Competitors circled the track for the running events, while others took on the shot put, discus, javelin, high jump, long jump and triple jump field events. Reporter ALICE PARMINTER hit the starting blocks to catch the action.



Liam Balfour from Mercury Bay Area School competes in the shot put.



Waihi College's Chenelle De Lange lines up her javelin throw.



The boys circle the track in the 3000 metre race.

Photos: ALICE PARMINTER



It's all on in the 100 metre dash.



Sienna Moore from Hauraki Plains College in the high jump.



Thames High's Jason Prak flies high in the triple jump event.



Protect yourself against flu before winter arrives

The flu vaccine is free if you're over 65

It's also free for pregnant people and for many others with certain underlying health conditions, including diabetes, heart and lung diseases, and mental health conditions.

To book your flu vaccine:

- visit [BookMyVaccine.nz](https://www.bookmyvaccine.nz)
- call the Vaccination Healthline on 0800 28 29 26
- contact your doctor, pharmacy or healthcare provider.

[info.health.nz/flu](https://www.info.health.nz/flu)

SPORTS

Email your sports news, reports and photos to editor@valleyprofile.co.nz

Off to the races

The Thames Valley Secondary Schools Swimming Champs meet took place in Thames on March 12. Students from schools across the valley freestyled, butterflyed, backstroked and dived through their paces under Sport Waikato's "Positive Vibes Only" banners. The motto is from an initiative by the sporting agency to encourage support and good sportsmanship within the sporting community, and the students embodied the good vibes on the day with plenty of cheering for everyone in the pool. Reporter **ALICE PARMINTER** dived into the action.



Boe Leach from Hauraki Plains College in the boys 100m individual medley.



Paeroa College's Pippa Frater, left, and Katikati College's Indiana Woodward.



Swimmers wait for the whistle in the 14-15 year old boys backstroke.

Photos: ALICE PARMINTER



Lexis Rohrlach from Thames High School in the 16+ girls backstroke.



The 14-15 year old boys dive in.



Paeroa's Indie Robinson.

TradeZone

Thames



CONTACT US

www.readbros.co.nz
 07 868 6608 admin@readbros.co.nz
 308 Pollen Street, Thames 3500, New Zealand

Ziegler & Brown

BUNDLE DEALS
 ENDS 5TH APRIL OR WHILE STOCKS LAST
 MORE SIZES AND OPTIONS AVAILABLE IN STORE

Ziegler & Brown

Includes:

- 53200 ZIEGLER & BROWN ELITE 2-BURNER BBQ GREY
- 53204 ZIEGLER & BROWN ELITE MOBILE CART 2/3 BURNER
- 549838 ZIEGLER & BROWN SMOKER BOX 150x75mm ROUND SS
- 547986 ZIEGLER & BROWN THE MODERN BBQ COOKBOOK
- 547948 ZIEGLER & BROWN BAKE & ROAST PACK 3 PCE
- 53205 ZIEGLER & BROWN ELITE HALF HOTPLATE REVERSIBLE
- 547942 ZIEGLER & BROWN PIZZA STONE LARGE 38cm



WAS \$1380.75 NOW \$1100

Includes:

- 552911 ZIEGLER & BROWN PORTABLE GRILL BBQ 1-BURNER GREY
- 552912 ZIEGLER & BROWN PORTABLE/TWIN FOLDING CART TROLLEY
- 547967 ZIEGLER & BROWN PORTABLE GRILL TRIVET KIT SS
- 547948 ZIEGLER & BROWN BAKE & ROAST PACK 3 PCE
- 547960 ZIEGLER & BROWN PORTABLE GRILL FULL C/I HOTPLATE



WAS \$1158.70 NOW \$900

In Brief

SERIOUS CRASH

State Highway 2 in the Karangahake Gorge was closed on March 31 after a crash near Waikino. The two-vehicle crash happened near School Rd, and was reported just before 1pm. Police said there were serious injuries. Detours were put in place and motorists were advised to avoid the area and expect delays.

MINING APPLICATION LODGED

OceanaGold has lodged an application for the Waihi North Project with the Environmental Protection Agency under the Fast-track Approvals Act process. The 11,000-page application was lodged on March 7 and subsequently underwent a check on 'completeness and scope' from the agency. Once accepted, a panel of experts will be convened, which will then

have around 30 working days to approve or decline the application. However, there is no timeline by which the panel must be convened. The panel is also not obligated to hold a hearing over the application.

CONSTRUCTION BEGINS

Construction of Whitianga's new Refuse and Recycling Transfer Station is due to begin in late April. The \$11.5 million facility, located on Moewai Rd, is projected to open in June, 2026. The site will include a foundation for the development of a resource recovery centre, similar to the Seagull Centre in Thames. Whitianga's existing refuse transfer station will remain in use until the new facility is open.

DAYLIGHT SAVINGS ENDS

Daylight Savings ends on Sunday, April 6, at 2am - remember to set your clocks back one hour.

Bundle up your pet's vet care

ADVERTORIAL

Are you avoiding a trip to the vet because you're worried about the cost? Anexa's Bundle pet wellness plan offers a simple, affordable way to manage your pet's healthcare with easy monthly payments.

At Anexa, we're passionate about pets and believe every owner should have access to regular professional veterinary care - without financial stress. That's why Anexa created Bundle, a budget-friendly 12-month plan covering essential healthcare services.

Enrolling your cat or dog into Bundle means unlimited vet consultations, routine vaccinations and an annual blood and urine analysis to help detect diseases early.

The plan also includes discounts on surgery, treatments, pet food and dental care,

as well as nail trimming and microchipping - if your pet hasn't already been chipped.

Anexa customer Rachael, who has five rescue dogs - including three with special needs, says Bundle has been a game changer.

"We can't afford to insure them all, especially with pre-existing conditions, but with Bundle, vet visits are super affordable. We did the maths and we're actually saving money.

"With the unlimited consultations, we never hesitate to bring our pups in. It gives us peace of mind, knowing that a simple tummy ache isn't something more serious like an obstruction or poisoning."

Learn more about Bundle at your local Anexa clinic or visit anexa.co.nz/bundle.

- Supplied by Anexa

Lynne's gift shop will be temporarily closed for renovations from March 30th. Reopening as Christine & Co Easter week, Monday April 14th. Come and see all the exciting changes.



500 Pollen St, Thames - 868 8725
07 868 8725 | 029 0228 8586
christinesgiftshop@gmail.com
www.facebook.com/@christine.and.co.2025

Scott Simpson

MP for Coromandel

Contact me anytime
0800 550 330 • scottsimpson.co.nz
mpcoromandel@parliament.govt.nz
f [scottsimpsonmp](https://www.facebook.com/scottsimpsonmp)




Authorised by Scott Simpson, Parliament Buildings, Wellington.

Paeroa Auto Electrical

- Auto Air Conditioning
- Latest Diagnostic Tools for your European Car
- Range of Batteries for Cars, Trucks, Tractors, RVs and more
- On Farm Auto Electrical Service

Ph: 07 862 8565 Email: unipoint@xtra.co.nz
3 Belmont Road Paeroa



BUNDLE your love for your fur-babies today.

And unwrap our budget-friendly plan, with a monthly payment to cover healthcare costs for your four-legged friends.

With our wellness plan, you'll receive:

- Unlimited vet consultations - we'll even trim their nails.
- Routine vaccinations.
- Annual health checks.
- Discounts on surgery, treatments, pet food, and dental care.

Joining fee + GST **\$35** per month.



- Gordonton
- Maramarua
- Matamata
- Morrinsville
- Ngāruawāhia
- Ngatea
- Paeroa
- Raglan
- Te Aroha
- Te Kauwhata
- Thames

anexa.co.nz | 0800 284 3838

SIGN UP NOW.



anexa.co.nz/bundle

Budding plans for community garden

By ALICE PARMINTER, Public Interest Journalism funded by NZ On Air

A group of Paeroa locals are banding together to develop a community garden, and they need the public's help.

The newly formed Paeroa Mahinga Kai committee is developing a proposal for a community-led garden initiative, named the Paeroa Community Marā Kai, in the heart of the town. They're asking for community feedback via an online survey, which is open until April 4.

The committee's vision is for a shared space shaped by the community.

The survey said the garden would be a "space for connection, learning, and kai sovereignty", with community members already expressing "a desire to learn traditional planting methods, improve access to fresh, healthy kai, and create a space for rongoā Māori".

The committee will approach Hauraki District Council for funding and support, and is hoping for permission to locate the garden on an unused council-owned site on the corners of Aorangī and Ainslie Rds.

Committee co-chair Sarsha Waite said the amount of community support they have received since they began working on the proposal around six weeks ago has been encouraging.

"[We've been] pushing for donations, ringing businesses, and putting together the information, and so many businesses are on board," Sarsha said. "And it doesn't need a big start-up fund."



Sarsha Waite, left, and Lisa Parkin are part of the new Paeroa Mahinga Mai committee.

Photo: ALICE PARMINTER

Sarsha said the committee had already received offers of supplies and other help from local businesses. They have been given five IBC water tanks which they plan to convert into raised garden beds, and have had offers of support from people with practical skills such as soil testing and construction as well.

The committee is also receiving guidance from community organisations like Te Korowai Hauora o Hauraki and the Hauraki Māori Trust Board, Sarsha said.

"I work in a school - I've seen the need. We're just all trying to get together and do a little something for the community," she said.

"We want to start doing some

workshops, teaching people how to build their own gardens at home, how to compost, how to recycle properly, all those kinds of things.

"I think everyone's starting to realise the real pinch of cost of living. And also that there's nothing here for our youth. So if we have this, then the youth can get involved... it benefits them, benefits the community, because then they feel like they're giving back, they're contributing to the community, and therefore they respect it more. It's a win-win for everyone."

The section the committee hopes to secure is ideal for a community garden space, Sarsha said - it's in a lower social-economic area

where she sees a lot of need, and many of the committee members live nearby.

"It's perfect. You've got a big tree where we can trim back the lower branches and hang a swing and make it like a community vibe," she said.

"And if we have the fruit trees all up there, you know, the hope is that [kids will] come and they'll climb up the fruit trees and pick themselves some fruit."

DETAILS: Go to <https://forms.office.com/r/FC8LycgM9g> to fill out the Paeroa Community Marā Kai survey. Closes April 4.



Chris' Quiz

Weekly quiz compiled by Chris Parminter

1. Which word means "yes" in Spanish?
2. Complete the song lyrics: "I can _____ clearly now, the rain has gone"?
3. What is the chemical symbol for Carbon?
4. Which consonant letter is silent in the word 'fluorescent'?
5. Complete the book title: Twenty Thousand Leagues Under the _____?
6. Which letter represents the speed of light in physics?
7. Is the Mediterranean usually referred to as a gulf, an ocean or a sea?
8. Which major scale in music is made up only of white notes on a piano?
9. Which letter is referred to by the term 'Charlie' in the NATO phonetic alphabet?
10. Which letter is the Roman numeral for 100?



ANSWERS: 1. Si; 2. See; 3. C; 4. C; 5. Sea; 6. C; 7. Sea; 8. C; 9. C; 10. C.

M7-2 SERIES TRACTORS

IN STOCK NOW!

5 YEARS WARRANTY

Starting at \$135,000

Central Motors Hauraki Ltd
 NGATEA 07 8677524

W | CENTRALMOTORS.CO.NZ
 PH | 027 2850349 ANDREW WELCH

Our reputation is spreading

- Farm Effluent Equipment
- Full System Design
- Installation
- Service

0800 4 EFFLUENT | www.williamsirrigation.com

- Cowsheds • Feed Pads
- Rolling Feed Bin Lids

"Over 30 Years Experience"

Ph. (07) 867-6712
 S/H 2, Kerepehi
info@quinn.co.nz
www.quinn.co.nz

Rural Life

Six dairy and grazing farms for sale by receivers

By KELLEY TANTAU, Public Interest Journalism funded by NZ On Air

A suite of six moderate-sized Waikato and Coromandel Peninsula dairy and grazing farms is for sale by receivers keen to meet the market, and Bayleys Country salesperson Karl Davis is expecting strong interest.

The package comprises three dairy units near Paeroa and a fourth dairy unit with two connected support blocks near Hikuai on the Coromandel Peninsula.

Mr Davis expected interest would be boosted by this season's "bumper payout" and the improving outlook for dairy farming.

"Fonterra's payout this season is projected to be about \$19 billion, 30 percent more than the previous season, so confidence in the outlook for dairy is strengthening," he said.

"With the forecast for dairy specifically, and drystock still being very strong, the farming sector for the short term looks very good."

The opportunity for buyers to make an offer on one or any combination of the properties will also broaden their attraction, with Mr Davis saying that so many options available at one place at one time was



Dairy units and support blocks in Paeroa and a Hikuai are for sale by receivers.

"rare".
"These properties will appeal to someone looking for scale who is prepared to make an offer for either the cluster of three dairy units near Paeroa or the three connected properties in Hikuai," he said. "There's also a good number of farmers in the greater Waikato region who have beach houses on the Coromandel Peninsula, so either

the dairy unit and one or both grazing blocks might be an attractive option for them to mix farming and time off at the beach."

"However, it is more likely the farms will sell individually and will appeal strongly to people looking for their first farm, particularly sharemilkers."

The three Paeroa dairy units

range in size from 88ha to 104ha (more or less) and average production for the past three seasons ranges from nearly 90,000kgMS per year to just over 108,000kgMS per year, depending on supplementary feeding levels.

Mr Davis said there were houses in reasonable condition, plus additional buildings on the Paeroa properties which could be developed into accommoda-

tion options.

Meanwhile, the 62ha (more or less) Hikuai dairy unit has a 32-sided herringbone dairy shed with in-shed feeding system and features several barns, plus a workshop.

Mr Davis said its close proximity to several beaches in the Coromandel would appeal to buyers who enjoyed "farming, fishing and a beach lifestyle".

One of the adjoining grazing blocks was 74.4ha (more or less) flat to rolling country with two storage sheds. The second grazing block was 81.5ha (more or less) of rolling to steep hill country with its own stock yards.

"Under a receivership situation, there is often a better opportunity to pick something up than it otherwise would be if it wasn't a receivership," Mr Davis told *The Profile*.

"Coupled with lower interest rates - it certainly looks like a great time to be involved, if you ever had a thought to buy a farm."

DETAILS: The farms are for sale by Deadline Private Treaty. For more information, contact Karl Davis on 027 496 4633 or email karl.davis@bayleys.co.nz.



A range of 4 Wheelers & Side by Sides now in stock, starting from

TRX250TM at \$13,852 INC GST



Hauraki Plains Motors

1 Pipiroa Road, Ngatea • Ph 07 867-7021

A/Hrs Mike 027 440 4681, Miles 027-227-1121 Email: admin@hpmotors.co.nz

ENTERTAINMENT

Youth enjoy theatre training

"I can't wait to get on the road again, the life I like is making music with my friends and I can't wait to get on the road again."

This Willie Nelson quote aptly describes the situation that three younger members of Thames Music And Drama found themselves in recently.

They embarked on a 16-hour return drive (including short stops, road works and detours) to Palmerston North with president Diane Connors to attend a theatre training weekend.

Being theatre enthusiasts, Lexi Thomas, Elijah Lester and Sophia Haakma, sang most of the way.

The playlist comprised of the three-hour cast recording of *Hamilton*, a variety of Disney musical hits, a spattering of pop songs and even some Nirvana.

The rock genre was fitting, as they stepped into their characters from the society's upcoming production, *School of Rock*, which they sang to also, of course.

While the adults attended the Musical Theatre New Zealand's annual conference and training weekend at the Palmerston North Conference and Event Centre, just along the road at The Globe theatre our trio joined another 29 youth aged eight to 18 years from around the Manawatu region for the inaugural Whakakā Junior programme.

They endured long, exhausting days learning lyrics, movement and dance to three numbers, which they performed to conference attendees on Saturday evening.

"It was really intensive training," Sophia said. "We had to learn a lot in a very short amount of time".

She said it was a good experience overall.

They honed their skills in telling a story through song and displaying appropriate expression all the while ensuring that



Theatre enthusiasts, Lexi Thomas, Elijah Lester and Sophia Haakma. Photo: SUPPLIED

diction and volume were clear, even when singing in a New York accent or a whisper.

The Thames Music And Drama committee sponsored the teens for the weekend, with assistance from a Pub Charities grant.

"It's part of our tikanga to invest in our youth," Ms Connors said.

"They literally are our future, and these three have been involved with our theatre for a few years now, as well as holding lead roles in our next production, so it was a no-brainer."

Lexi, Elijah and Sophia have participated in several workshops, performed on stage and the later two have also played in bands for Thames MAD shows.

"It's a case of 'watch this space', as I am certain with all this talent, and the passion and commitment these rangatahi demonstrate, that they may well be leading the local theatre forward in the not to distance future."



Mandy, Jason, and Julie inspect Te Puru Community Centre's new kitchen. Photo: SUPPLIED

\$22k kitchen for Te Puru Hall

By ALICE PARMINTER, Public Interest Journalism funded by NZ On Air

The kitchen at the Te Puru Community Centre has finally had a long-awaited facelift.

A celebration was held at the Thames Coast facility on March 12, to thank all those involved with the upgrade. The celebration marks the tail end of years of effort by the committee and community to restore and refurbish the building, after it was damaged by storms in 2008.

The hall was closed to the public in 2011, after building inspectors found significant issues with the roof structure.

The Thames-Coromandel District Council estimated at the time it would cost around \$150,000 to fix. Additionally, the building needed upgrades to the exterior, drainage, kitchen and bathrooms.

The community rallied together to bring the hall back into working order, committee member Kay Steen said.

"Thanks to the generosity of the community and Placemakers, the hall was put back together better than before," she said.

"In 2021 we made an agreement with TCDC to upgrade the toilet block and we would upgrade the kitchen. The toilet block was finished in July, 2021, so it's taken another four years to complete the kitchen."

The new kitchen, which cost \$22,000, was funded by the hall committee. The council paid for new flooring, at a cost of \$5000. Kay said the committee was excited to invite staff from Mitre10, who worked on the installation, along to the celebration.

"Julie [from Mitre10] made a comment that we couldn't ignore. She said that of all the kitchens their department designed and ordered, they have never seen one finished," Kay said. "We fixed that and invited Julie, Mandy and Jason to join us in an afternoon tea and have a look at what they helped to create."



FLIGHT CENTRE

Jess Lamb Travel

022 674 9237

jess.lamb@ind-flightcentre.co.nz

LEFT BANK THEATRE

Ph: 07 868 3142 www.leftbanktheatre.co.nz 659 Pollen St, Thames

Movies from Thursday 3 April to Wednesday 9 April

For times, see our website, pick up a brochure by the cinema doors, or email or phone us. You can book and pay online or at the cinema, or book by phone or email and pay when you arrive.

The Last Showgirl (88 mins) M. The Last Showgirl, a poignant film of resilience, rhinestones and feathers, stars Pamela Anderson as Shelly, a glamorous showgirl who must plan for her future when her show abruptly closes after a 30-year run. Pays homage to the working class of Las Vegas. 83% on Rotten Tomatoes.

Tinā (125 mins) M. Story of a Samoan teacher, who struggling after the death of her daughter in the Christchurch earthquakes, reluctantly takes on the role of substitute teacher at a wealthy private school.

Bonhoeffer: Pastor. Spy. Assassin (132 mins) M. Berlin during the Third Reich, examining Bonhoeffer's determination to live his life with uncompromising political and spiritual courage, while speaking truth to power, in his attempt to save countless Jewish lives. True story.

Widow Clicquot (91 mins) M. Chronicles the gritty journey in the early years of the Veuve Clicquot vineyard in 19th century France and brings to life the fascinating young woman behind the iconic orange label. Based on the novel The Widow Clicquot: The Story of a Champagne Empire and the Woman Who Ruled It.

The Last Journey (95 mins) M. (Swedish with English subtitles). An emotional and hilarious story exploring a son's attempts to coax his father into reengaging with life. A joyous road trip through the south of France.

The Great Escaper (96 mins) M. The Great Escaper' is a 2023 biographical drama film starring Michael Caine and Glenda Jackson (based on the true story) of an 89-year-old British World War II Royal Navy veteran who "broke out" of his nursing home to attend the 70th anniversary D-Day commemorations in Normandy, France in June 2014. Along the way, he is aided by strangers, makes some new friends and says a heartfelt goodbye to a fallen friend, while news of his "escape" makes him an international sensation.

Thames Valley Club Rugby

SENIOR A Saturday April 5th

Paeroa	V	Mercury Bay	
Waihou	V	Hauraki North	
Thames	V	Waihi Athletic	
Whangamata	V	Cobras	

All Senior A games start at 2.00pm (unless stated) • Teams named first indicate home team

Paeroa	V	Mercury Bay	Sat Apr 5th	12.25pm
Waihou	V	Hauraki North	Sat Apr 5th	12.25pm
Thames	V	Waihi Athletic	Sat Apr 5th	12.25pm
Whangamata	V	Cobras	Sat Apr 5th	12.25pm
Ngatea	V	Tairua	Sat Apr 5th	2.00pm
Bye				

SENIOR B

WAIHI CRAFT EXPO

FREE ENTRY FREE ENTRY FREE ENTRY FREE ENTRY

Exhibition & Sales

A Variety of Craft Groups In One Location

St John's Anglican Church Hall, Waihi
(across the road from the pumphouse)

April 26 Sat 9.30am - 3pm

April 27 Sun 11am - 2.30pm

Details of where each group meets and how to join will be available at the expo

Once I start something, I know I'll be okay

OPINION

By MICHAEL WILKES



Almost every day, one of my children starts the morning upset, saying they don't want to go to school or kindy. Today, it was my youngest daughter. Full of despair and tears, she declared, "I don't want curly hair. I want straight hair. I'm not going to kindy!"

We sat and talked. I affirmed her, told her she was beautiful.

I asked her how many people say they wish they had hair like hers.

"No one does," she said. I reminded her, but she wasn't in a listening mood.

As the conversation continued, I gently told her she would be going to kindy. I reminded her that she always comes home with a highlight from her day. And then I said the phrase that has become a mantra in our home: "Once I

start, I know I'll be okay".

It's a simple phrase, but a powerful one. So often, we feel fear or resistance before doing something - but once we start, the fear fades, and we just get on with it.

In our family, this phrase has become embedded in our kids' thinking. I love when my older children cut me off with, "Yeah, Dad, I know - once I start, I'll be okay".

They've learned it, they believe it, and even better, they live it. And that's the real goal - not

just to hear wisdom, but to internalize it and apply it when it matters most.

Nothing makes me prouder than hearing them use it in their own moments of fear, encouraging themselves with the very words we've spoken over them.

So, what's a wall you or those around you keep running into?

Whether it's your kids, your students, your employees - or even yourself - maybe it's time to create a phrase, mantra, or motto that helps break through fear.

A simple reminder that nudges us forward instead of shrinking back.

Because once we start, we'll realise... we will be okay.

Michael Wilkes is a Living Well Trust Youth Worker. He and his team provide mentoring and resilience programmes across Thames and Paeroa to more than 300 students a year. They are passionate about supporting our young people to thrive. Much of this work is funded outside of schools and it becoming increasingly challenging in the current climate. Email michael@livingwell.org.nz to sign up to their quarterly newsletter or to become a supporter.

Health & Wellbeing

ADVERTISING FEATURE

Discover a lifetime of health with Evergreen Chiropractic

Are you looking to optimise your health and live more vibrantly?

At Evergreen Chiropractic, we take a proactive approach to empowering everyday people to achieve a lifetime of wellbeing.

In a culture that often waits for dis-ease, we offer personalised and holistic chiropractic programmes designed for long-term health.

We care for family members of



every age, from infants to seniors, focusing on enhancing, growing, and preserving your health through every life stage.

Our expert chiropractic analysis and care, combined with education and support, aim to help you feel better, live well, and preserve longer.

We work with quality of life goals to help you function better today and live better tomorrow.

Exciting news!

Dr Peter Wass will be back at



Evergreen Chiropractic for the month of April.

Contact us today to book your appointment and take a proactive step towards a healthier future. Email: admin@evergreenchiropractic.co.nz, Phone: 07 868 6665.

Evergreen Chiropractic - A Lifetime of Health

- Supplied by Evergreen Chiropractic

Dr Peter Wass, left, is back at Evergreen Chiropractic for the month of April.



Annual flu clinics to be held at Health Ngatea during April

Greetings to our community.

It's that time of the year again where we are running flu clinics to protect against the Influenza Virus.

We will have these clinics at the practice once again, at the covered area out the front of the building.

Clinics will be available on April 2, 9 and 16.

We will also be offering the Covid-19 Booster to all those who are eligible at the same time you have your flu shot.

2025 eligibility for funded influenza vaccine - pregnant people, people aged 65 years and over, people aged six months to under 65 years with eligible



conditions, children four years of age and under who have been hospitalised for respiratory illness or have a history of significant respiratory illness, people aged six months to under 65 years with serious mental health and addiction conditions.

Please give us a call on 07 86 77521 to book your appointment time.

- Supplied by Team Health Ngatea.

Dr Peter Wass is with us for the month of April!

Did you know we take xrays in our practice!?

Come in and get checked - we have scrapped our Reactivation fee and you can claim new ACC through us!

www.evergreenchiropractic.co.nz

07 868 6665

admin@evergreenchiropractic.co.nz

Best wishes from,

Dr Tim, Dr Char, Dr Pete & Dr Ben, Steph, Nikki & Rechelle.

HEALTH & WELLBEING

SPECIAL OFFER!

BOOK YOUR PLACE TODAY!

Contact Nikki

022 130 3885

nikki@valleyprofile.co.nz

The Valley Profile

CoromandelApp

Book your advertisement in our monthly Health & Wellbeing page for six issues and receive a free 1/4-page editorial space to showcase your business

Terms & Conditions apply

TE KOROWAI
HAUORA O HAURAKI

Te Kawaurua
ACC Navigation Service

Working alongside whānau to support and guide them on their ACC journey

Te Kawaurua is a kaupapa Māori navigation service, delivered by Te Korowai Hauora o Hauraki, that supports whānau in their engagement with ACC*

This service is available to all whānau, from pēpi to kaumātua, residing in the Hauraki rohe.

Referrals welcome via email or phone:

0508 835 676 - option 4

accnavigator@korowai.co.nz

korowai.co.nz

*ACC (Accident Compensation Corporation) provides support and assistance when someone gets injured as the result of an accident.

CALL THE EXPERTS

2ND HAND / VINTAGE

The Shed & Co
 It's a "shed" & it's full of interesting stuff
 58 Coronation St, PAEROA
 Sam 022 601 3656
"It's the most diverse range under one roof"

ARBORIST

TREE SHAPES
 Qualified Arborists
 • Treework Large & Small
 • Stump Grinding • Hedge Trimming
 • Fruit Tree Pruning • Chipping
 For a free quote call
07 868 3985 or 0274 726627



Vern Harding of Scrappy Verns.

File photo: KELLEY TANTAU

ARBORIST

Hauraki Tree Services
 Qualified and insured arborists.
 20+ years experience
 - Large tree removal specialists
 - Pruning and hedge trimming
 - Height / weight reductions
 - Land clearing and reclamation
 - Stump grinding - Scrub mulching
 - Advice and consultancy
 Get in touch with us today for a free quote.
 info@haurakitrees.co.nz
 0800 HTS tree (0800 487 8733)

Scrap metal master looks after regions

Scrappy Verns is the local expert for all things scrap metal collection in the Hauraki-Coromandel area.

Scrap vehicles, old vehicles, tractors, machinery, anything metal they can take at "top prices".

Owner Vern Harding says, "anything metal, we take".

Vern marked a significant milestone last year, celebrating 20 years since he first opened the doors to his business and started providing services across Coromandel, Thames, Ngātea, Paeroa, Waihi and Te Aroha.

"We're scrap metal collectors. We can do farm clean ups and car pick-ups, any scrap metal we buy, copper, brass, batteries, steel etc."

CONTACT Vern on: 021 621 437, or pop in at 48 Coronation St, Paeroa. Open Hours: Monday - Friday 8am-5pm, Saturday 9am-12pm.

With an extensive list of services including the collection, clearing, removal, and recycling of metals, Scrappy Vern's leaves no leaf unturned, or in this case, metal.

ARBORIST

TREE TOPS
 Qualified Experienced and Insured Arborists
 Tree removal, pruning, hedging and property maintenance
 Quality Mixed fire wood • Quality Oak smoking wood chunks
 0210 838 9922 • heathsvan@gmail.com

ARBORIST

We solve your tree problems
 Tree Removal • Stump Grinding • Pruning
 • Land clearing and hedge trimming
 • Storm Clean Up
 Qualified, experienced, fully insured
 Trusted treework for over 25 years
 Call today
SHORT BACK'N'SIDES LTD
 027 439 0367
 shortbacknsides.co.nz

BUILDING SERVICES

PROFESSIONAL TRADE SERVICES
 BUILDING | ELECTRICAL | PLUMBING
RESIDENTIAL - House Renovations - Kitchens
 Bathrooms - Pergolas - Fencing - Decks
 Gidbing - Tiling - Landscaping - Painting
 General Home Maintenance and Much More
COMMERCIAL - Body Corporate Maintenance
 Programmed Maintenance - 24/7 Emergency Callouts
CONSENTS - Required Building Consent work lodged with Councils
DESIGN - CAD Design for Extensions - 3D Room Design (see how your job will look like when completed)
INSURANCE - Preferred Insurance Provider
 Flood / Earthquake / Cyclone / Electrical
 Plumbing Work
 Ph 0800 088 001 (Call for a FREE Estimate) www.ptsnz.com
 Office & Showroom 3 Coronation Street, Paeroa

BUILDER

CAIRD CONSTRUCTION LTD
 • New home builds
 • Renovations and extensions
 • Decks, fences, and outdoor areas
 • Any building work, big or small
 Shaun 021 389 198 | admin@cairdconstruction.com

FUNERALS

Valley FUNERAL SERVICES
 FUNERAL DIRECTORS
 Our family serving yours — in the Hauraki & Thames Corromandel Districts

CIVIL CONSTRUCTION

HOPPER CONSTRUCTION
 TRACTOR MULCHING | PILE DRIVING | RETAINING WALLS
 DRILLING | ROADING EARTHWORKS | DEMOLITION | DRAINAGE
 EMAIL: info@hopperconstruction.co.nz
 PHONE: BOB 027 448 3119

CLEANING

A J CLEAN UP CREW
 • Lawn mowing
 • Weedeating
 • Hedge & tree trim
 • Section clearing
 • Gardening
 • Rubbish removal
 • Interior house clean
 • New build clean/clear
 • Odd jobs considered
 • One off jobs welcome
 0800 464 898
 Alaine Hedges
 027 242 7268
 John Hedges
 027 457 2018
 Email: info@ajcleanupcrew.co.nz

DRIVING ACADEMY

DRIVING COURSES
 Driving lessons
 Learner Licence courses
 Defensive Driving courses
Book now 027 314 1577 (text or phone)
 admin@valleyeducation.co.nz
Valley Education
 07 868 7892

• Direct Cremation for Ngatea, Paeroa, Te Aroha, Thames & Waihi **\$2850 GST incl**
 • Traditional, Eco & Bespoke Funerals from \$4800
 • Pre-Planning
Phone: 0800 862 6362
 Des & Christine Necklen
 Funeral Directors

EARTHWORKS & CARTAGE

Digger, Bulldozer & Truck Hire
 ► Mulching
 ► Cartage of Metal, sand, fertiliser, palm kernel, hay & maize silage
PHONE TIM 027 278 5384
T & A MCWATTERS LTD

EARTHWORKS

MEARES EARTHWORKS
 TAKING CARE OF ALL YOUR EARTHWORK NIGHTMEARES
 • General Earthworks & Digging
 • Housepads • Farmlane Raceway
 • Tree Removal • Demolitions
 • Driveways & Retaining Walls plus much more...
 Ph: 027 269 7144 or 07 863 8208
 E: mearesearthworks@gmail.com
 www.mearesearthworks.co.nz

ELECTRICIAN

Electrical Laser
 "Totally Dependable"
 • New Builds • Heat Pumps
 • Alterations • Service and Maintenance
 • Quotes • Commercial
 • Lighting Plans • Fire Systems
 Ph: 07 863 7746 Email: waihi@laserelectrical.co.nz

ELECTRICIAN

Cool Electric
 Electricians
 Heat Pumps Air Conditioning
 Security Systems
07 868 7151
 E: cooelectric@xtra.co.nz
 W: www.cooelectric.co.nz
22C Ngati Maru Hwy, Kopu, Thames

FERTILISER

AVOCA
 nutrients for soil health
Supplier of fast acting Lime and Fertiliser
 P: Rev 021 503 029
 P: Gill 021 532 903

FLOORING

Flooring Design
 Visit our showroom at:
 33 Belmont Road, Paeroa
PHONE: 07 214 7208
 Monday to Friday 9am - 4pm
 Saturday by arrangement

FLOORING

Supply & Installation for Domestic & Commercial
 • Carpet • Vinyl
 • Laminate • Polyurethane
 Contact us for your free Measure and Quote
Phone: 021 020 47027
Email: dan@thefloorman.co.nz

FLOORING

OWENS FLOORING
 Flooring Sales and Installation
FREE MEASURE & QUOTATION
 Carpet, Vinyl, Wood & Laminate Flooring
SHOWROOM: 5/57 Wilson Road, Waihi Beach
 Open 8.30am - 4.00pm Monday to Friday
 Saturdays By Appointment
Phone: 027 233 7277 / 07 863 5723
Email: sales@owensflooring.co.nz
 www.owensflooring.co.nz

'Endless opportunities' at new Coro centre

By **KELLEY TANTAU**, Public Interest Journalism funded by NZ On Air

A new pursuit centre in the heart of native Coromandel bush will combine a marine and conservation focus to foster a love for the outdoors in rangatahi (youth).

The new Hillary Outdoors Coromandel Centre was celebrated on March 6 with around 80 people attending, including local community members, Hillary Outdoors staff, its patron Alexander Hillary, founder Sir Graeme Dingle, and previous property owners, the Clegg family.

Hillary Outdoors chief executive Hillary Campbell told *The Profile* stories were shared about the property's handover from the Clegg family to Hillary Outdoors, the organisation's history since its founding in 1972, and hopes for the centre's future.

Situated in Port Charles, it was envisioned to be the organisation's third centre, alongside the Tongariro and Aotea centres; however, due to various operational challenges, the Aotea centre closed in 2024.

"The main requirements for the new centre were that it be remote and diversify the learning experiences offered from the existing centres," Hillary said.



Activities include coasteering. INSET: Sir Graeme Dingle speaks during the Coromandel celebration. Photos: SUPPLIED

"Travelling to the centre needed to be achievable, without the added monetary and logistical challenges of flights and ferry rides. The Coromandel location perfectly fulfilled these criteria, providing an ideal setting for accessible, unique outdoor opportunities."

The new Coromandel centre is surrounded by 340 hectares of native bush, two-thirds of which

is Queen Elizabeth Conservation Trust land. There are six participant cabins on site, each capable of sleeping up to 12 in a dormitory-style setting.

Those who take part can experience a wide range of activities, including sea kayaking, waka ama, coasteering, surfing, snorkelling, rock climbing, and tramping through the bush with overnight

stays in hammocks or under flys.

"These activities are part of custom-length programmes that can range from multi-day to multi-week, and even multi-year options," centre manager Hayden Devine said. "The programmes blend hands-on conservation and environmental education for young people with thrilling outdoor adventures. Rangatahi con-

tinually learn through adventure, helping them build confidence, recognise their strengths, and develop a deeper connection with the environment."

Hayden said the location of the centre was a "key highlight" that would draw participants to the area, offering "endless opportunities for transformative experiences both on land and at sea".

"The best way to develop a love for the outdoors is simply to spend time in it," he said.

"At the centre, rangatahi will immerse themselves in nature daily, connecting through adventure and active participation. They will gain confidence, recognise their strengths, and understand the power of the outdoors.

"Biosecurity systems, in collaboration with the Waikato Regional Council, have been put in place to protect Kauri trees and educate young New Zealanders about the importance of preventing Kauri dieback.

"We look forward to collaborating more in this space to inspire our participants to love and respect the natural environment."

DETAILS: To register interest, or for more info: www.hillaryoutdoors.co.nz.



CALL THE EXPERTS - Continued

HOMEKILL

Hunts Home Kills

For all your meat and game processing needs.

- We are dedicated to you, the customer.
- Hygienic, vacuum packed products.
- Professional facilities.
- Smoked meats are our specialty.
- 12 - 14 days hung on the bone, minimum
- Game orders over 10kg
- Premium custom orders to meet your needs

Ph: 0800 250 939 • Mob: Mike - 021 411 210
E: huntshomekill@gmail.com
W: huntshomekills.nz • Follow us on FB

KITCHENS

KITCHENS

Scullery, Wardrobe, Laundry units etc

Quality Product - Competitively priced
No obligation FREE measure & quote



PENINSULA JOINERY LTD
THAMES P: 07 868 6323

E: office@peninsulajoinery.co.nz

We cover Thames, the Coromandel Peninsula & Waikato wide

PAINTER

WE PAINT NZ

For all your painting needs
Roof, Exterior, Interior.

No Job to small
Residential / Commercial
35 years experience
Specializing in Roof painting,
Make your Roof last Years more, all the latest solutions for all types of roofing.

Contact Peter for free quote
info@hotsy.nz 021618384

PAINTER

That Painter Ltd.

Residential & Light Commercial
We paint like a pro - only if you want!

- Interior & Exterior • Residential & Light Commercial

- Fully Insured • Workmanship Guarantee

Contact Stan on 0223137911

to discuss your project.

PLASTERER

TWINWOLF PLASTERING SERVICES

- Exterior Plastering specialist.
- 30 years experience
- All aspects of plastering including. Gib stopping, fireplaces, steps, foundations, patios, block walls and renovations.
- Specialising in exterior repairs & modern finishes.

Shannon: 022 428 2239
Twinwolfservices@gmail.com

PROPERTY MAINTENANCE

Property Maintenance One Stop Shop

- Carpentry
- Plastering
- Painting
- Tiling
- Gardening

30 yrs exp

No Silly Prices.

Ph. Shane 027 480 5586

RUBBISH REMOVAL

Smart Bins

Skip bins, Wheelie Bins, Farm Bins

Phone us or book online
0800 4 MY BIN or
www.smartbins.co.nz

SCRAP METAL

Scrappy Verns

Buyers of all scrap metal & cars
Farm clean up specialists
Top prices paid

Phone Vern • 021 621 437

SCRAP VEHICLES

CARS WANTED CASH PAID

Any unwanted car, ute, van or 4WD No warrant, No WOF, Deregistered, not going?? NO PROBLEM



PH/TXT KEVIN
027 299 6165

SEPTIC TANK CLEANING

ALLENS UNITED

Paeroa (2015) Ltd

LIQUID WASTE SPECIALISTS

0800 862 720 | 027 442 0067

TOWING

THAMES TOWING & WORKSHOP

24HR Breakdown • AA Towing • WOF

Full mechanical workshop
MTA & AA Approved

Ph: 07 868 7685 - 24/7
thamestowing@gmail.com
29 Queen Street, Kopu

TYRES & BATTERIES

HAURAKI TYRE and BATTERY

- Stockists of all major tyre brands
- Exide Batteries with extended warranties
- Wheel Alignments.

314 Pollen St, Thames
Ph 868 8182

WASTE REMOVAL

SKIP BIN HIRE

For Household, Business,
Building and Farm
Rubbish Disposal

Ph: 0800 754 724
Paeroa Skip Bins (2017) Ltd

WATER BLASTING

HOTSY WATERBLASTING "Old school service"

We turn up on time + Do a great Job + Clean up = HAPPY customer
Housewashing, Roofwash + Treatments.
Gutter cleaning.

Decks, Paving + Driveway scrubbing.
Fences + Balustrades. Solar Panel cleaning

Residential - Commercial
Contact Peter for free quote
info@hotsy.nz 021618384

WINDSCREENS

PRECISION WINDSCREENS

We come to you!

Chip Repairs - Windscreen replacements
-Insurance claims

PH: 0272127750
www.precisionwindcreens.co.nz




WINDSCREENS



-Windscreen Replacements
-Stone Chip Repairs

Ph: 07 549 3399
110 Main Road, Katikati
(Behind the Caltex Service Station)
www.katikatiglassandwindcreens.co.nz

CLASSIFIEDS Deadline 12noon Monday

Death Notice	For Lease	For Sale	Handyman	Builder	Tutoring	Situations Vacant
<p>KANARA, Lisa: Passed away on 12/3/2025 Youngest daughter of John and Sheryl. Loved friend of Sam Swannell. Gone way too soon, resting with her dad. Friends are invited to a remembrance day at The Junction Hotel, Thames at 1pm on Saturday 12th April.</p>	<p>Yards for lease, Thames and Kopu. Suitable for trucks, vehicles or trade business base. Ph 027 440 7101</p>	 <p>Dry and seasoned Teatree \$160 per m³ Pine \$90 per m³ Free delivery to Paeroa and surrounds Shaun & Chanelle Neustroski Ph 027 938 0349</p>	<p>An experienced handyman covering all trades with over 20 years exp building trade. Please contact Laurie King 0212510246. ktpropertyservice.com</p> <p>Mowing, hedges, fencing, gardening, carpentry, painting, retaining walls, welding, waterblasting. Work is good quality and I will not attempt to work outside of my skills. Insured. Dennis Schuler 022 129 0169</p>	<p>Reno's, decking, fencing. For free quote ph Phil 021 088 63559</p>	<p>English & maths private lessons. Previous relief teacher & a qualified NZQA assessor. Phone Lisa 021474933 www.Aim4Ways.co.nz</p>	<p>Woodturners Cafe is looking for a staff member to join our team for 20-30 hours per week, including 1 weekend day. No experience necessary as we can provide full training for the right applicant. Contact Lorraine with expression of interest on 021 246 9376</p> <p>An opportunity exists for a part-time permanent bar person to work at the Ohinemuri Club in Paeroa. Approximately 20 hours per week and must be able to work Saturdays. No experience needed, training will be given. Please email CV to the Manager ohinemuriclub@xtra.co.nz or drop it into the club.</p>
<p>In Memoriam</p> <p>BOYD, William: Passed away 3 years ago on the 2nd April. Dad & Popa Not a day has gone by that we haven't thought of you. Your Spirit lives on in love & our memories of you, that we hold dear. Your Wisdom will continue to inspire us & the way that was shared in the Simple moments. Remembering you with gratitude & warmth in our hearts All our love Tam, Emerald-may, Rigby, Nick, Riley-Ray & Roxannah-Lee</p>	<p>Gardening</p> <p>STUMP GRINDING. All sizes, all areas. Thames based. Ph 021 060 7659</p>	<p>Handyman Services</p>  <p>Building, home maintenance & general gardening services Phone: Fleur or Crighton • 0273 913 283</p>		<p>Painter</p> <p>Painter available now, experienced in interior and exterior work. Ph 0272142442</p>	<p>To Let</p> <p>Ngatea 3br, 2bth, double gge Tony 027 637 2024</p>	
<p>Church Notices</p> <p>Thames Spiritualist Church, Sunday April 6th, 2pm Grahamstown Hall. Speakers: Clinton May, David Foster and Vicki Grace.</p>	<p>Pets</p> <p>KENNELS WAITAKARURU Boarding Kennels and Cattery. "A great place for your pet to stay." Shane & Sherrin Hansen. Ph: 07-867-3344, SH25 Waitakaruru, RD6 Thames</p>	<p>Storage</p> <p>TOTAL STORAGE LTD KEREPEHI / PAEROA 10FT CON. \$125 per mnth 20FT CON. \$240 per mnth T&C's apply 021 67 67 99 info@totalstorage.co.nz</p>	<p>Home Maintenance</p> <p>HOUSEWASH SOFT WASH the exterior of your house, roof or patios, fences and driveways. Cleaning, moss treatment and water blasting for 25 years. Also exterior windows cleaned. Call 0800 737 777 or phone Andy direct on 027 313 4386 atlasgroup@xtra.co.nz</p>	<p>FENCING CONTRACTOR Residential & Rural Retaining walls & more High quality workmanship Competitive prices Call Matt 021 1727 148</p>	<p>Wanted To Rent</p> <p>FT employed tenant looking for a place to park and live in his house bus, (prev landlord selling up). Kopu, Thames, Ngatea areas if possible. Quiet mature man. Please contact Michele 022 074 6330, nga mihi.</p>	
<p>Waihi Assembly of God Church "Worship & Healing" 10am Sundays Scout Hall, Baker St, Waihi</p>	<p>Storage</p> <p>Thames Valley Storage – secure, dry units available, two sizes. Call Trev 027 4076966</p>	<p>Home Maintenance</p> <p>'SHE SORTS IT' From Mess to Impress: Gardening, home cleaning, painting, declutter, odd jobs, deceased estates. Creating Beautiful, Organised, Serene Spaces. Qualified and experienced horticulturist. Ready to Present to market or event! Contact Pippa or Gin Ph 027 747 7000</p>	<p>Public Notice</p> <p>EASTER PUBLISHING DEADLINES Tuesday April 22nd Classifieds: 4pm Thursday April 17th General: 4pm Monday April 14th</p> 	<p>Public Notice</p>  <p>HAURAKI DISTRICT PLAN NOTIFICATION OF DECISION ON PLAN CHANGE Hauraki District Council gives notice that it has made its decisions on the application and submissions on the following Plan Change: Proposed Plan Change 6 (Private): Extension of Martha Mineral Zone Pursuant to Clause 10(4)(b) of the First Schedule of the Resource Management Act 1991, Hauraki District Council gives notice that on 27 March 2025 it made Decisions on the application, submissions and further submissions to Proposed Plan Change 6: Extension of Martha Mineral Zone. Amendments to District Plan: • Rezoning of land (19 properties) from Residential Zone to Martha Mineral Zone • Rezoning of land (7 properties) from Low Density Residential Zone to Martha Mineral Zone • Amendments to Section 5.17 (Martha Mineral Zone) and 8.3.1 (Amenity Matters – Noise) of the Operative Hauraki District Plan – Hauraki Section • Consequential amendments including to Planning Maps K1, K3, K4 and K7 To view the Decisions and Amendments of Proposed Plan Change 6: Extension of Martha Mineral Zone, visit https://www.hauraki-dc.govt.nz/plan-change-6 or any Hauraki District Council office or library. D A Speirs Chief Executive on behalf of Hauraki District Council 1 April 2025</p> 		
<p>Waihi Bible Chapel Ph. Num 021 522 668 Come read the Word. Learn Scripture (King James) You want the truth, it's all here. Come help us read and learn. Bible Study Wednesday nights 6pm</p>	<p>Storage Unlimited 25 Ngati Maru Highway Kopu, Thames Clean, secure, dry Units available 7 x 3.6m and 7 x 5.5m Phone 07 868 9944</p>	<p>Storage</p> <p>STORAGE KOPU, PAEROA TE AWAMUTU "New Units" Ph 027 440 7101 07 868 3033 Safe n Sound Storage www.safestorage.co.nz</p>	<p>Home Maintenance</p> <p>Public Notice</p> <p>PAPER DELIVERIES Although we endeavour to deliver our paper to everyone, sometimes we just cannot achieve this. If you are one of the few who did not receive your weekly paper, please note they are available here: NGATEA - Ngatea 4 Square, HDC Council Offices, Ngatea Post Shop, Z Petrol Station, Ngatea Purple Dairy PAEROA - Moores Caltex, Countdown, HDC Council offices, Takenote, Paeroa 4 Square, Paeroa Information Hub WAIHI - Maybelle Superette, New World, Toyworld/Takenote, Information Centre, Daffodil Dairy, Waihi Supervalue THAMES - Totara Veggie Shop, Mobil Kopu, Gull Service Station, Martina 4 Square, Bin Inn, Tararu Dairy, Queen St Mobil, Goldfields Mall, Pak'N'Save, Paper Power, Thames 4 Square, Carson's Bookshop, Thames Council Offices, Kauaeranga Store TURUA: Turua Dairy KEREPEHI: Kerepehi Dairy</p>			



Family Notices

Share
Connect
Remember


The Valley Profile can publish your Family Notices, Obituaries, In Memoriam, tributes. Enquire today.



Delivered weekly to every letterbox in Ngatea, Waiti, Paeroa, Thames, Thames Coast, plus both the local and the Coromandel Peninsula. Find us online at www.valleyprofile.co.nz or download the Coromandel App

Contact Nikki Ph 022 130 3885 email nikki@valleyprofile.co.nz
DEADLINE: 12 Noon Monday

Last month's winner of the lotto ticket was Marlene Trumper, who found Pete in the March 4th edition in the A1 Motorcycles advert.
Go to page 2 for details on how to enter.



PAPER DELIVERIES
Although we endeavour to deliver our paper to everyone, sometimes we just cannot achieve this. If you are one of the few who did not receive your weekly paper, please note they are available here:
NGATEA - Ngatea 4 Square, HDC Council Offices, Ngatea Post Shop, Z Petrol Station, Ngatea Purple Dairy
PAEROA - Moores Caltex, Countdown, HDC Council offices, Takenote, Paeroa 4 Square, Paeroa Information Hub
WAIHI - Maybelle Superette, New World, Toyworld/Takenote, Information Centre, Daffodil Dairy, Waihi Supervalue
THAMES - Totara Veggie Shop, Mobil Kopu, Gull Service Station, Martina 4 Square, Bin Inn, Tararu Dairy, Queen St Mobil, Goldfields Mall, Pak'N'Save, Paper Power, Thames 4 Square, Carson's Bookshop, Thames Council Offices, Kauaeranga Store
TURUA: Turua Dairy
KEREPEHI: Kerepehi Dairy



DIRECT CREMATION within 15kms of Thames: \$3100.00
DIRECT CREMATION requiring transfer from Whangamata, Tairua, Whitianga, Waihi, Paeroa, Ngatea and Coromandel: \$3345.00
DIRECT CREMATION requiring transfer from North of Coromandel or Waikato Hospital: \$3445.00
Outside all of these areas: \$3445.00 plus mileage

SUPPORT LOCAL

For additional information please refer to Twentymans website: twentymans.co.nz CONTACT: 07 868 6003

*Additional mileage may apply, according to roading conditions. ** Plus Doctors Fee. The Doctors Fee for medical paperwork required for Direct Cremations is an additional charge. This fee ranges from \$45.00 to \$200.00, determined by the patient's Doctor.



Please advise your Vet of your wish to use Forever Pets Crematorium



Visit the website: foreverpets.co.nz for further information.

CONTACT: Forever Pets 07 868 6003.

We guarantee the ashes you get back belong to your pet and only your pet.

SUPPORT LOCAL



SUDOKU

194

Fill the grid so every row, every column and every 3x3 box contains the numbers 1-9

4			8	5	3		9	6
6	8			4	2	5		
			7				8	4
7			1			8	4	
3	4						5	7
	5	2			6			9
5	3				7			
		8	3	1			6	5
1	6		5	8	4			3

EASY

5			1			7	2	3
3		4		8				
			9			8		
		2			5	6	3	
	4	3	6			2		
	8			5				
			4		8		7	
1	5	7			8			4

MEDIUM

4		7					5	
6			7				3	2
	3			5				
3	2	5					6	
			8		3			
		8				3	2	4
				1			6	
7	9				5			3
		1				7		8

HARD

194

HARD

4	1	7	2	3	8	5	9	6
6	5	9	7	4	1	8	3	2
8	3	2	9	5	6	4	7	1
3	2	5	1	7	4	6	8	9
9	4	6	8	2	3	1	5	7
1	7	8	5	6	9	3	2	4
2	8	3	4	1	7	9	6	5
7	9	4	6	8	5	2	1	3
5	6	1	3	9	2	7	4	8

MEDIUM

5	9	8	1	6	4	7	2	3
3	6	4	2	8	7	5	9	1
7	2	1	5	9	3	4	8	6
9	1	2	4	7	5	6	3	8
6	7	5	8	3	2	1	4	9
8	4	3	6	1	9	2	7	5
4	8	9	7	5	6	3	1	2
2	3	6	9	4	1	8	5	7
1	5	7	3	2	8	9	6	4

EASY

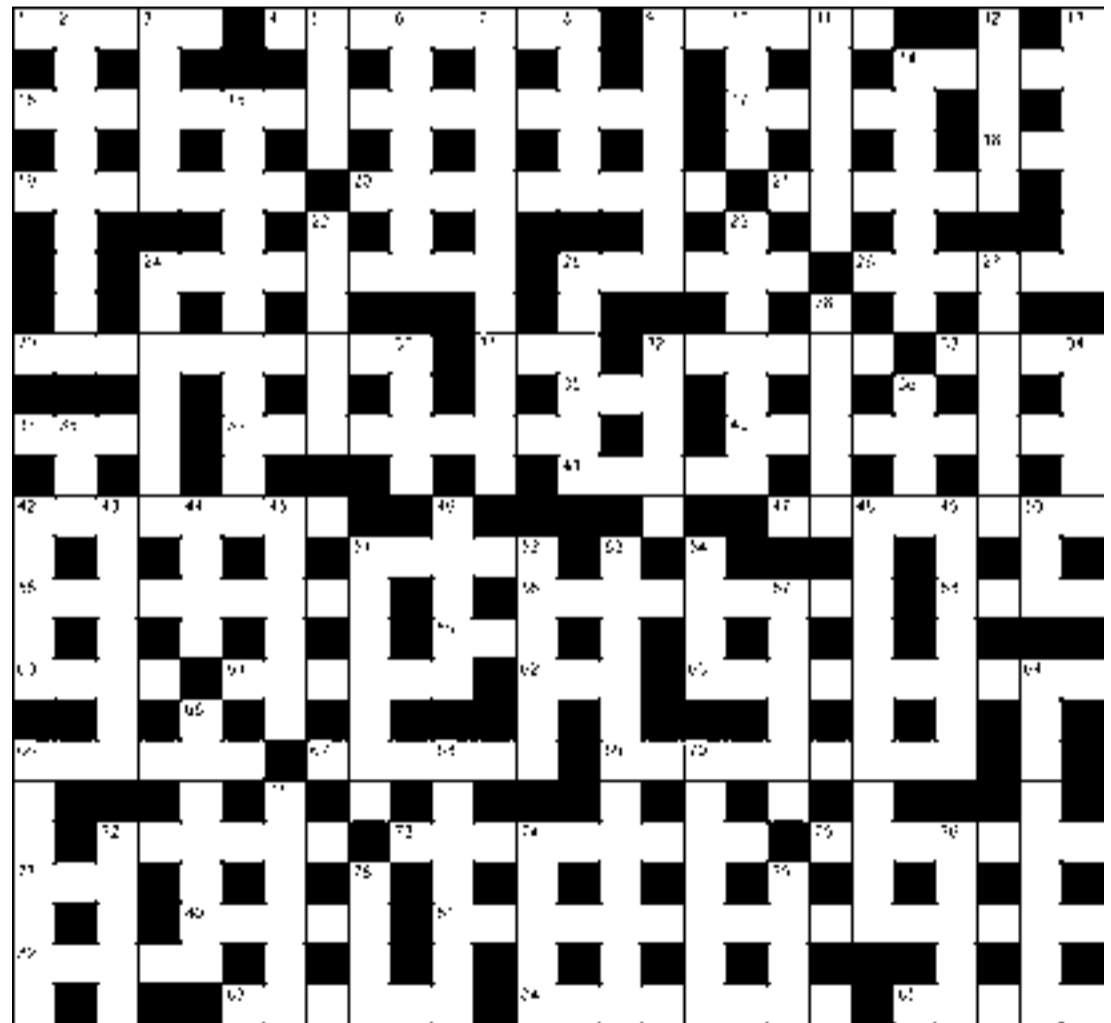
4	1	7	8	5	3	2	9	6
6	8	3	9	4	2	5	7	1
9	2	5	7	6	1	3	8	4
7	9	6	1	3	5	8	4	2
3	4	1	2	9	8	6	5	7
8	5	2	4	7	6	1	3	9
5	3	4	6	3	2	7	9	1
2	7	8	3	1	9	4	6	5
1	6	9	5	8	4	7	2	3

Puzzles © The Puzzle Company
www.thepuzzlecompany.co.nz

JUMBO CROSSWORD

214

- ACROSS**
- 1 Burnt remains (5)
 - 4 Statuette (8)
 - 9 Technical language (6)
 - 14 Maltreat (5)
 - 15 Usually (4,5,4,3)
 - 17 Strong-smelling (5)
 - 18 One-legged jump (3)
 - 19 Enigma (7)
 - 20 Sparked off (9)
 - 21 Ailment (6)
 - 24 Impostor (9)
 - 25 Strata (6)
 - 26 Film text (6)
 - 29 Famous (10)
 - 31 Infant (3)
 - 32 Extent (6)
 - 33 Slide unexpectedly (4)
 - 35 Tint (3)
 - 37 Naked (4)
 - 39 Earth's apex (5,4)
 - 40 London square (9)
 - 41 Scoundrel (5)
 - 42 Predicted (8)
 - 47 All over the planet (8)
 - 51 Of sound (5)
 - 55 Distasteful (9)
 - 56 Most adorable (9)
 - 58 Unlock (4)
 - 59 Day before (3)
 - 60 Open pie (4)
 - 61 Daze (6)
 - 62 Tune (3)
 - 63 Without shoes (10)
 - 66 Fume with anger (6)
 - 67 Aimless scribble (6)
 - 69 A wind (9)
 - 72 Stampede (6)
 - 73 Keeps up (9)
 - 75 Overzealous person (7)
 - 77 Alcoholic drink (3)
 - 80 Depart (5)
 - 81 Cacophonous; ear-splittingly loud (3,2,4,3,4)
 - 82 Frequently (5)
 - 83 Entrapped (6)
 - 84 Dotted, flecked (8)
 - 85 Confused, bewildered (2,3)
 - DOWN**
 - 2 Book, film plot (9)
 - 3 Occasion (5)
 - 5 Thought (4)
 - 6 Said (7)
 - 7 Ceremonial opening (12)
 - 8 Boy's name (5)
 - 9 Nervous (7)
 - 10 Prevalent (4)
 - 11 Set-up costs (6)
 - 12 Aggressive (5)
 - 13 Proteas (anag)(7)
 - 14 Bring forward (7)
 - 16 Patience (11)
 - 22 Annoy persistently (6)
 - 23 Warship (7)
 - 24 Go before (7)
 - 25 Foam (6)
 - 27 Against the law (7)
 - 28 Bring to mind (6)
 - 30 Author, Roald (4)
 - 32 Condescend (5)
 - 34 Celebration (5)
 - 36 Young sheep (4)
 - 38 Fuss (3)
 - 42 Defect (5)
 - 43 Make a booking (7)
 - 44 Rescue (4)
 - 45 Fairness (6)
 - 46 Make cross (5)
 - 48 Panting (3,2,6)
 - 49 Expression of remorse (7)
 - 50 Falsehood (3)
 - 51 Illness indication (7)
 - 52 Split (6)
 - 53 Additional to (4,3,5)
 - 54 Bludgeon (4)
 - 57 Ribald (6)
 - 64 Disentangle (9)
 - 65 Hone (7)
 - 66 Garden bird (7)
 - 68 Stunted (7)
 - 70 Pillage, rifle through (7)
 - 71 Allocate (6)
 - 72 Leaves out (5)
 - 74 Jottings (5)
 - 76 Accounts inspection (5)
 - 78 Handy (4)
 - 79 Surrender (4)



PREVIOUS SOLUTION

ACROSS: 1 Essay, 4 Sticky situation, 14 Tonic, 15 Arrow, 16 Disbelieve, 17 Lofty, 19 Set, 20 Swallow, 21 Barometer, 22 Script, 25 Profiteer, 27 Answer, 28 Candle, 33 Drawbridge, 35 Hot, 36 Sudden, 37 Gala, 39 Hen, 41 Account, 42 Sink, 43 Negligent, 44 Areas, 45 Reckless, 50 Ex, 51 Athletic, 55 Brain, 58 One in four, 59 Taught, 60 Aviator, 61 Bar, 63 Yarn, 64 Jersey, 65 Awe, 66 Determined, 68 Abduct, 69 Budget, 71 Appearing, 76 Clover, 77 Dexterity, 79 Offered, 81 Ape, 84 Unite, 85 Lengthened, 86 Strip, 87 Eases, 88 In the nick of time, 89 Frank.

DOWN: 2 Shrewd, 3 Atoll, 5 Thin, 6 Cabbage, 7 Yellow, 8 Irene, 9 Useless, 10 Toll, 11 Office, 12 Angst, 13 Scuttle, 14 Typical, 18 Conference, 23 Study, 24 Deadens, 26 Rowlock, 27 Anthrax, 29 Dialect, 30 Crêche, 31 Choke, 32 Height, 34 Edit, 36 Sneer, 38 Attic, 40 Mill, 45 Roomy, 46 Cleared, 47 Link, 48 Scored, 49 Tabby, 50 Entrant, 52 Hovercraft, 53 Elation, 54 Ironed, 55 Brusque, 56 Cubes, 57 Shed, 62 Steep, 67 Octopus, 68 Apparel, 70 Gremlin, 72 Patient, 73 Design, 74 Grotto, 75 Resign, 76 Cease, 78 Tunic, 80 Enter, 82 Mesh, 83 Seam.

BAYLEYS

NEW LISTING



Boundary lines are indicative only



Pauanui 896A Hikuai Settlement Road

No more horsing around – 10.96ha of opportunity!

Calling developers, retiring farmers, and upscaling lifestylers—this expansive property offers space, privacy, and potential, just minutes from the beach. Enjoy sea and bush views from the substantial Mediterranean-style home. It's livable as is but offers exciting renovation potential to create your dream oasis. The elevated site features grazing, spring-fed troughs, native bush, beehives, and thriving exotic fruit trees, perfect for sustainable living. The property is equipped with access tracks, nine bay shedding, an equestrian arena, and stockyards. Plus, recreational activities and key amenities are just moments away.

The owners are committed to selling—don't miss the opportunity!

bayleys.co.nz/2180773

10.9_{ha} 3 2 3

Auction (unless sold prior) 11am, Thu 1 May 2025

96 Ulster Street, Hamilton

View 11-11.45am Sun 6 Apr & Sun 13 Apr

Pippa Jackson 027 747 7000

pippa.jackson@bayleys.co.nz

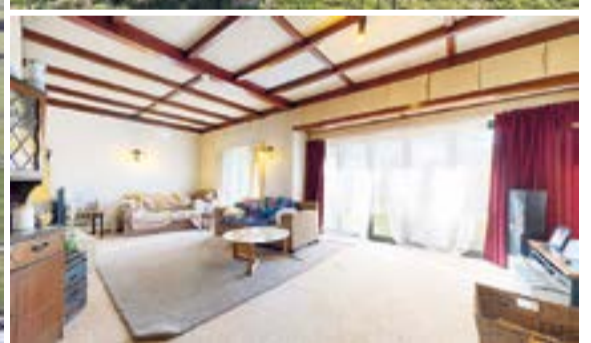
Karl Davis 027 496 4633

karl.davis@bayleys.co.nz

MH REALTY LTD, BAYLEYS, LICENSED UNDER THE REA ACT 2008



Boundary lines are indicative only



Hikutaia 364 Townsend Road

Lifestyler, support unit or grazers

Set on 34.0 ha (more or less) of productive grazing land, this well located property offers an established income platform and options for future potential. Suited to a variety of buyers, from those seeking an established run off or support unit to families wanting a farm upbringing. A block of this size presents the perfect opportunity to continue as a productive run off or support unit for neighbouring farms. The block is currently destocked however has capacity to run 120 R2's. The existing three-bedroom home is an added bonus, positioned to capture views of the Coromandel Ranges. There is also the possibility for subdivision to be explored. Call today!

bayleys.co.nz/2630048

34_{ha}

For Sale by Deadline Private Treaty (unless sold prior)
3pm, Thu 24 Apr 2025

Phone for viewing times

Karl Davis 027 496 4633 karl.davis@bayleys.co.nz

Seth Roe 027 320 6937 seth.roe@bayleys.co.nz

SUCCESS REALTY LIMITED, BAYLEYS, LICENSED UNDER THE REA ACT 2008



Boundary lines are indicative only



Puriri 107 Neavesville Road

Serene rural haven: family home with panoramic views

Escape to rural tranquility with this three-bedroom lifestyle property on 3.2 hectares (more or less) of rolling hills and lush greenery. The home features a master bedroom with ensuite, two additional bedrooms, and an open-plan kitchen, living, and dining area with modern appliances and an island bench. Large sliding doors lead to a spacious deck with stunning rural views. With 6.8kW solar panels, a double garage, fully fenced paddocks, extra shedding, and a private river beach, it's perfect for hobby farming or equestrian pursuits. Just a short drive to Thames, this property blends serenity and convenience. Call today!

bayleys.co.nz/2316097

3.2_{ha} 3 2 2

Asking Price \$1,099,000
Phone for viewing times
Karl Davis 0508 83 83 83
 karl.davis@bayleys.co.nz
Glenn Tanner 027 486 2399
 glenn.tanner@bayleys.co.nz
SUCCESS REALTY LIMITED, BAYLEYS, LICENSED UNDER THE REA ACT 2008
 MH REALTY LTD, BAYLEYS, LICENSED UNDER THE REA ACT 2008



Boundary lines are indicative only



Paeroa 324 Maratoto Road

A modern escape with rural views

Set on 5,117 sqm (more or less) with a stunning rural backdrop, this 2021-built home blends contemporary style with its surroundings. Designed to maximise space, light, and outlooks, it offers modern elegance and comfort. The open-plan living area features large windows framing countryside views, while sliding doors lead to a spacious deck. The sleek kitchen boasts quality appliances, stylish cabinetry, and a generous island bench. The well-planned layout includes three bedrooms, with the master suite offering a walk-in wardrobe and ensuite. With space to breathe and potential for landscaping or even a few animals, this home delivers.

bayleys.co.nz/2630052

5,117_{sqm} 3 1 2

Auction (unless sold prior) 11am, Thu 24 Apr 2025
 96 Ulster Street, Hamilton
View 1.30-2pm Sun 6 Apr
Karl Davis 027 496 4633
 karl.davis@bayleys.co.nz
Seth Roe 027 320 6937
 seth.roe@bayleys.co.nz
SUCCESS REALTY LIMITED, BAYLEYS, LICENSED UNDER THE REA ACT 2008



BAYLEYS



Boundary lines are indicative only



Turua 923 and 969 Hauraki Road

Proven production in the heart of the Hauraki Plains

Looking for a quality dairy unit? This 65.7ha (more or less) farm in the Hauraki Plains offers strong production with a potential stop bank lease. Featuring flat, well-drained land, it includes a separate 7ha title. Fencing is good, with races leading to a centrally located 20 ASHB cowshed. Milking 200-215 cows for Fonterra, it produced 75,770kgMS in 2022/23. Reliable council water ensures supply. Infrastructure includes a wintering barn, implement shed, workshop, PKE bin, and haybarn. A three-bedroom home with a garage and workshop makes it ideal for a family or one-man operation. Call us today!

bayleys.co.nz/2630047

65.74_{ha}

Asking Price \$2,595,000 + GST (if any)

View 11am-12pm Fri 4 Apr

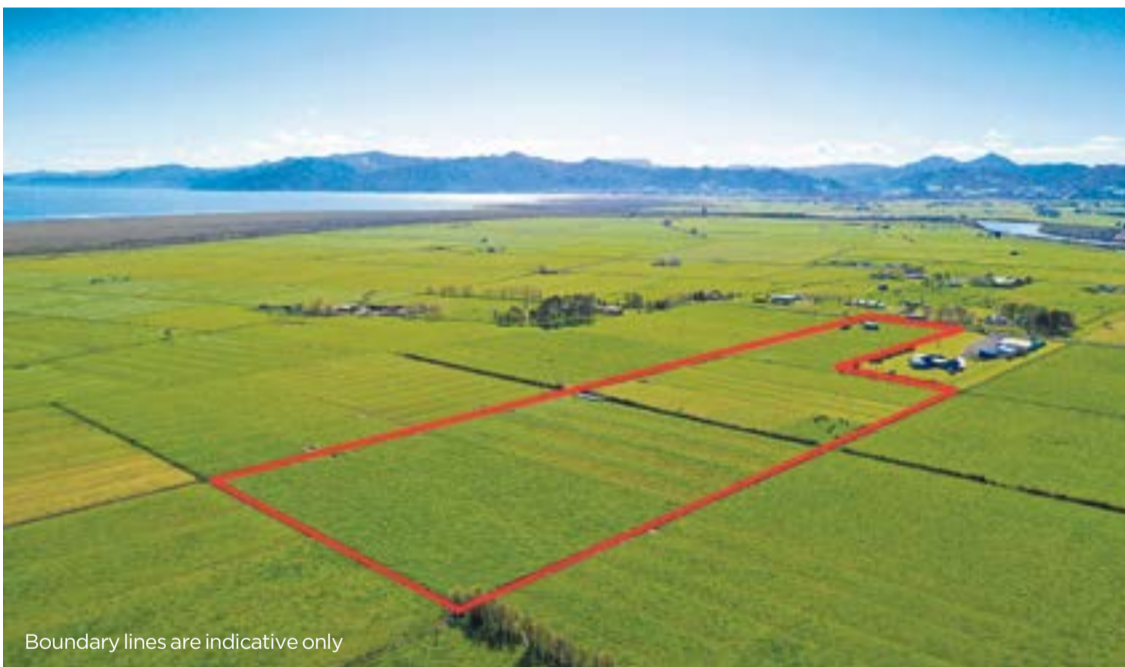
Karl Davis 0508 83 83 83

karl.davis@bayleys.co.nz

Sam Aislabie 027 429 5410

sam.aislabie@bayleys.co.nz

SUCCESS REALTY LIMITED, BAYLEYS, LICENSED UNDER THE REA ACT 2008



Boundary lines are indicative only



Pipiroa 45 Arawa Street

Flat, fertile block awaits buyers

Up for grabs is this flat, fertile, 6.1574 ha (more or less) block. The current owner is using it to graze approximately 20 head of mixed-age cows all year round. This block is ready for you to hit the ground running, with power available. A large 9x6m three-bay implement shed, built in 2005, provides ample storage for toys and farm equipment. Water and power connection is readily available at the boundary on council supply, with both titles metered together. The block is divided into 9 paddocks for ease of stock management. Whether you're envisioning a small hobby farm, growing your own produce, or enjoying the peace of open spaces, this block offers a canvas for your dreams. Call us today!

bayleys.co.nz/26300018

6.1_{ha}

Asking Price \$495,000 + GST (if any)

Phone for viewing times

Karl Davis 027 496 4633 karl.davis@bayleys.co.nz

Seth Roe 027 320 6937 seth.roe@bayleys.co.nz

SUCCESS REALTY LIMITED, BAYLEYS, LICENSED UNDER THE REA ACT 2008



Boundary lines are indicative only



Miranda 42 Back Miranda Road

Lifestyle section, three minutes to boat ramp

Set on 5.16 hectares (more or less) in the heart of the Hauraki Plains, this bare lifestyle section in Miranda offers a rare chance to create your rural escape. Build your dream home, establish a small farmlet, or invest in sought-after land. A mix of open pasture and mature trees provides privacy and structure, while a natural pond attracts birdlife. Mostly flat, it's an ideal building site with rural views towards the Coromandel Ranges. Close to Miranda Hot Springs and Shorebird Centre, with easy access to Waitakaruru, Thames, and Pukekohe. Power and services are at the road boundary.

bayleys.co.nz/2630024

5.1 ha

Auction (unless sold prior) 11am, Thu 24 Apr 2025
 96 Ulster Street, Hamilton
Phone for viewing times
Karl Davis 0508 83 83 83
 karl.davis@bayleys.co.nz
Connor Davis 027 496 4622
 connor.davis@bayleysngatea.co.nz
SUCCESS REALTY LIMITED, BAYLEYS, LICENSED UNDER THE REA ACT 2008



Boundary lines are indicative only



Kaiaua 10 Rua One Place

Beachfront brilliance - sophistication, style, and space

Anchored on a no-exit road, this elevated 1,557sqm (more or less) beachfront home boasts breathtaking Firth of Thames views. Built for strength, the three-bedroom, three-ensuite + toilet home features an upstairs kitchen, downstairs kitchenette, and durable materials. Expansive windows frame uninterrupted ocean vistas, while a rimu benchtop adds warmth. Solid concrete walls and native timber details ensure character and longevity. A dumbwaiter aids convenience, and a Dolomite filtration system with 75,000L water storage boosts practicality. With direct water access, subdivision potential (subject to council approval), and Airbnb appeal, this coastal gem shines.

bayleys.co.nz/2630046

1,557 sqm 3 3

Tender (unless sold prior)
 Closing 3pm, Thu 1 May 2025
 96 Ulster Street, Hamilton
View 1.15-1.45pm Sun 6 Apr
Karl Davis 0508 83 83 83
 karl.davis@bayleys.co.nz
Connor Davis 027 496 4622
SUCCESS REALTY LIMITED, BAYLEYS, LICENSED UNDER THE REA ACT 2008



Moto X mayhem

The Waikato Schools MX Challenge took place at the Patetonga Motorcycle Club on March 28-29. Students from 33 schools across the region zoomed around the muddy and hilly terrain in an exciting, adrenaline-filled series of races. Among the competitors tackling the tight turns and thrilling jumps were several students from across the Hauraki, with Paeroa College taking home the win, and Hauraki Plains College placing fourth. Reporter ALICE PARMINTER took to the track to catch the dust-filled action.



Marlin Van Hellemond from Paeroa College.



Ryan Mills from Hauraki Plains College.



The 12-16 year-old 85 and 150 fcc race is off to a thrilling start.

Photos: ALICE PARMINTER



Hauraki Plains College's Wiremu Murray, front, takes a jump.



Jake Redmond from Hauraki Plains College.



HPC's Tyler Fitzgerald.

AVAILABLE NOW

- Two Bedroom Villa
- Three Bedroom Villa
- 2 Bedroom Apartment

ENQUIRE TODAY!

STAGE 1 IS NOW COMPLETE ENQUIRIES FOR STAGE 2 ARE WELCOME!

All apartments are within walking distance to Thames' shops, cafes and walkways.
The perfect location to enjoy your fun-filled retirement

Our open plan, single level apartments feature covered balconies with fantastic views of the sea, Kauaeranga River and mountains.

Each unit's elegantly finished kitchen, lounge, bedroom and bathroom offer stylish warmth and light.

All residents enjoy scenic views from each level's shared lounges, use of the Village Community Lodge and participation in all activities and amenities at your leisure.

PHONE US
to view
by appointment

*Come and experience
the difference!*



**Richmond
Villas**
LIFESTYLE VILLAGE

Living the lifestyle, loving the choice...

A lifestyle village in Thames on the Coromandel

82 Richmond St, Thames

0800 868 5484

www.richmondvillas.co.nz

